



# FQS<sup>®</sup>

## BATTERY

CATALOGUE



# INDEX

¿WHO ARE WE?.....	3
CAR AND 4X4 RANGES.....	5
BLACK RANGE.....	7
ORIGINAL RANGE.....	9
ORIGINAL ASIAN RANGE.....	11
PLATINUM RANGE.....	13
EFB START-STOP RANGE.....	15
AGM START-STOP RANGE.....	17
INDUSTRIAL VEHICLE RANGES.....	21
ORIGINAL RANGE.....	23
SHD RANGE.....	25
EFB RANGE.....	27
AGM RANGE.....	29
CLASSIC VEHICLE.....	31
AUXILIARY BATTERIES.....	31
LEISURE TIME.....	32
STARTER BATTERY.....	32
FASTENERS/TERMINAL TYPE/ POLARITY SCHEME.....	33
MOTORCYCLE RANGES.....	35
MAINTENANCE RANGE.....	37
AGM RANGE.....	39
GEL RANGE.....	40
LITHIUM RANGE.....	43
INDUSTRY RANGES.....	45
LIGHT TRACTION BATTERIES RANGE.....	47
LIGHT TUBULAR TRACTION RANGE.....	49
HEAVY TRACTION RANGE.....	51
SOLAR RANGE.....	53
AGM CARBON RANGE.....	55
AGM STATIONARY RANGE.....	57
AGM ELECTRIC VEHICLE RANGE.....	59
AGM HIGH RATE RANGE.....	61
AGM FRONT TERMINAL RANGE.....	62
GEL DEEP CYCLE RANGE.....	63
LITHIUM LIFEPO4 RANGE.....	65
TYPE OS TERMINALS.....	67
BATTERY DESING.....	68
BATTERY TESTER.....	69

**PURE**  
**PURE**  
**PURE**

## THE MOST ADVANCED TECHNOLOGY

We have the latest generation batteries for all types of applications. From automotive to industrial solutions. Our advanced technology guarantees higher performance, durability and efficiency..

### FIND THE PERFECT BATTERY FOR YOUR NEEDS

#### TECHNOLOGY

We incorporate the latest advances in energy storage to maximize performance and service life.

#### PERFORMANCE

Optimal operation in extreme temperatures, guaranteeing reliable starts in any condition.

#### DURABILITY

Designed to withstand more charge and discharge cycles, offering a longer service life.

#### SECURITY

Advanced systems against overloads, short circuits and overheating, ensuring safe operation.



SCAN THE QR CODE  
TO VISUALIZE OUR  
CORPORATE VIDEO



# ENERGY ENERGY ENERGY

FQS Battery, founded in 2010, is a reference brand in the field of batteries and electric accumulators. We offer products of the highest quality and an unbeatable service from the hand of a highly specialized professional team, in constant training to provide the best advice and technical assistance.

## IS WHAT MAKES US LEADERS WHAT MAKES US DIFFERENT

- WE HAVE ONE OF THE MOST COMPLETE CATALOGS IN THE MARKET.
- WE ARE COMMITTED TO SOLUTIONS AND PROCESSES WITH A HIGH TECHNOLOGICAL CONTENT.
- BEST QUALITY-PRICE RATIO, VARIETY AND AVAILABILITY.
- OUR AUTOMOTIVE LINE IS PRODUCED ENTIRELY IN EUROPE. WE HAVE OUR OWN LABORATORIES.
- WIDE PRESENCE IN ORIGINAL EQUIPMENT.
- WE ADVISE AND GUIDE OUR CUSTOMERS BASED ON OUR EXPERIENCE.
- WE OFFER A MORE TECHNICAL LABELING, WITH COMPLETE INFORMATION.
- WE HAVE OUR OWN BRAND AND WE CAN CREATE YOURS IN A PERSONALIZED WAY.
- RIGOROUS PROCESSES FOCUSED ON QUALITY, SAFETY, HEALTH AND ENVIRONMENTAL CARE.

### THE BEST SOLUTION FOR LATEST – GENERATION VEHICLES WITH HIGH – END EQUIPMENT



# OUR RANGES

## TOURING CARS AND 4X4



### RANGE BLACK

- TOURING CAR, SUV AND 4X4
- CAPACITY FROM 44AH TO 95AH
- ALLOY GRID CALCIUM/CALCIUM MATRIX PRESS (PUNCH)
- AIRTIGHT DUPLEX LID WITH DEGASSING CENTRALIZED
- ENVELOPE SEPARATOR FROM HIGH PERFORMANCE POLYETHYLENE
- REINFORCED THICK PLATES
- 180° TURN WITH NO LOSS OF ROTATION
- MINIMUM SELF-DISCHARGE
- BUILT-IN ANTI-EXPLOSION SYSTEM
- HIGH STARTING CAPACITY
- VIBRATION RESISTANT
- MAINTENANCE FREE
- LOAD INDICATOR CONTROL
- O-RING SEALING PLUGS



### ORIGINAL RANGE

- TOURING CAR AND SUV
- CAPACITY FROM 45AH TO 110AH
- EXPANDED GRID OF PB/CALCIUM ALLOY AND/OR CALCIUM/CALCIUM MATRIX PRESS (PUNCH)
- AIRTIGHT DUPLEX LID WITH DEGASSING CENTRALIZED
- ENVELOPE SEPARATOR OF HIGH PERFORMANCE POLYETHYLENE
- REINFORCED THICK PLATES
- 180° TURN WITH NO LOSS OF ROTATION
- MINIMUM SELF-DISCHARGE
- BUILT-IN ANTI-EXPLOSION SYSTEM
- HIGH STARTING CAPACITY
- VIBRATION RESISTANT
- MAINTENANCE FREE
- OE PLUGS AND/OR O-RING SEALS



### PLATINUM RANGE

- TOURING CAR AND SUV
- CAPACITY FROM 45AH TO 100AH
- ALLOY GRID CALCIUM/CALCIUM MATRIX PRESS (PUNCH)
- AIRTIGHT DUPLEX LID WITH DEGASSING CENTRALIZED
- ENVELOPE SEPARATOR FROM HIGH PERFORMANCE POLYETHYLENE
- REINFORCED THICK PLATES
- 180° TURN WITH NO LOSS OF ROTATION
- MINIMUM SELF-DISCHARGE
- BUILT-IN ANTI-EXPLOSION SYSTEM
- HIGH STARTING CAPACITY
- VIBRATION RESISTANT
- MAINTENANCE FREE
- LOAD INDICATOR CONTROL
- O-RING SEALING PLUGS
- 30% MORE BENEFITS

# OUR RANGES

## TOURING CARS AND 4X4



### ORIGINAL ASIAN RANGE

- TOURING CAR, SUV AND 4X4
- CAPACITY FROM 40AH TO 100AH
- ALLOY GRID CALCIUM/CALCIUM MATRIX PRESS (PUNCH)
- AIRTIGHT DUPLEX LID WITH DEGASSING CENTRALIZED
- ENVELOPE SEPARATOR OF HIGH PERFORMANCE POLYETHYLENE
- REINFORCED THICK PLATES
- 180° TURN WITH NO LOSS OF ROTATION
- MINIMUM SELF-DISCHARGE
- BUILT-IN ANTI-EXPLOSION SYSTEM
- HIGH STARTING CAPACITY
- VIBRATION RESISTANT
- MAINTENANCE FREE
- LOAD INDICATOR CONTROL



### EFB RANGE

- TOURING CAR, SUV AND 4X4
- CAPACITY FROM 50AH TO 100AH
- ALLOY GRID CALCIUM/CALCIUM MATRIX PRESS (PUNCH)
- AIRTIGHT DUPLEX LID WITH DEGASSING CENTRALIZED
- ENVELOPE SEPARATOR OF HIGH PERFORMANCE POLYETHYLENE
- REINFORCED THICK PLATES
- 180° TURN WITH NO LOSS OF ROTATION
- MINIMUM SELF-DISCHARGE
- BUILT-IN ANTI-EXPLOSION SYSTEM
- HIGH STARTING CAPACITY
- VIBRATION RESISTANT
- MAINTENANCE FREE
- HIGH PERFORMANCE AND CYCLIC LIFE



### AGM RANGE

- TOURING CAR AND SUV
- CAPACITY FROM 45AH TO 105AH
- ALLOY GRID PB/CALCIUM/SILVER MATRIX PRESS (PUNCH) CCDR
- SPECIAL CAPS WITH REGULATING VALVE (VRLA)
- ABSORBENT GLASS MATERIAL SEPARATOR (AGM)
- REINFORCED THICK PLATES
- INSTALLATION IN MULTIPLE POSITIONS
- MINIMUM SELF-DISCHARGE
- BUILT-IN ANTI-EXPLOSION SYSTEM
- HIGH STARTING CAPACITY
- VIBRATION RESISTANT
- MAINTENANCE FREE
- HIGH PERFORMANCE AND CYCLIC LIFE

# BLACK RANGE

# BLACK

Best value for money without sacrificing power and durability. Designed for those looking for reliable performance at the best price, offering safe starts, energy efficiency and long life. Perfect for those looking for quality at the best price.



## COMPETITIVE PRICE, HIGH TURNOVER

- **Ready to use:** Available in capacities from 44Ah to 95Ah to suit various needs.
- **Advanced grid technology:** Calcium/Calcium Matrix Press (Punch) alloy optimizes drivability and endurance.
- **Hermetic DUPLEX lid:** Centralized degassing system that improves safety and performance.
- **High-performance polyethylene envelope separator:** Increased efficiency and short-circuit protection.
- **Reinforced thick plates:** Increased durability and prolonged performance.
- **180° rotation:** Lossless overturning.
- **Low self-discharge:** Longer storage time without recharging.
- **Explosion-proof safety system:** Additional protection against sparks and fire.
- **Optimized starting power:** Maximum reliability even under extreme conditions.
- **High vibration resistance:** Ideal for demanding terrain and intense driving.
- **Maintenance-free:** Sealed technology for comfort and peace of mind.



MAINTENANCE  
FREE



ANTI  
EXPLOSION



ENVELOPE  
SEPARATOR



ANTI  
VIBRATION



LOW  
SELF-DISCHARGE

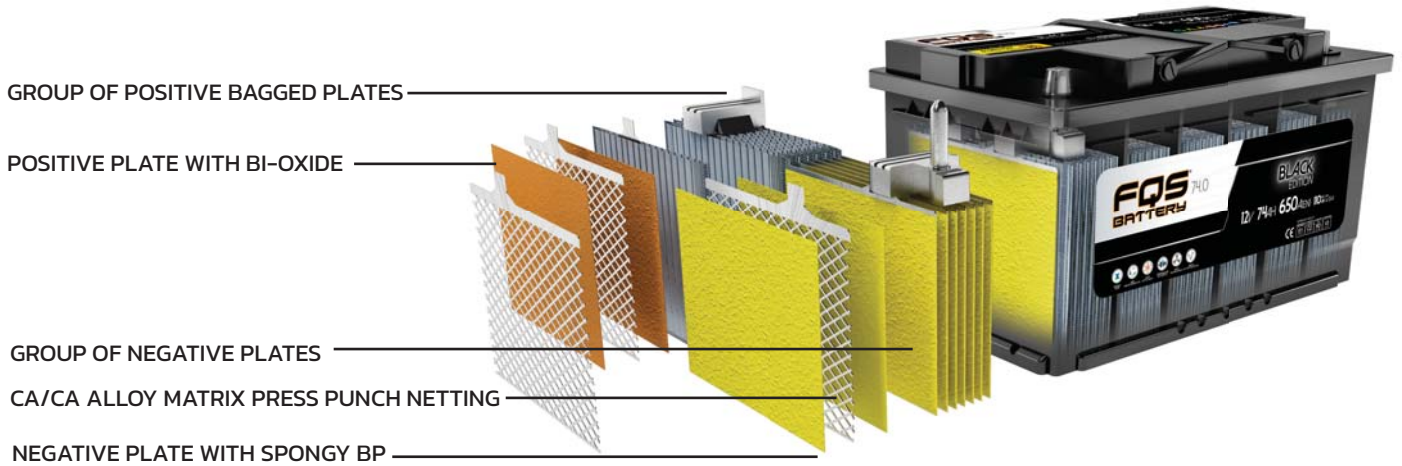


ORIGINAL  
QUALITY

LEGISLATION EN 50342



# REFERENCES



## BLACK RANGE

Reference	Voltage V	Capacity 20h (Ah)	Starting (EN) +/- 6%	Reserv. min a 25A	Box	Polarity	Hold Down	Terminal Type	Dimensions (mm)			Quantity per Pallet
									Length	Width	Height	
FQS44.0	12	44	350	70	L1	0	B13	1	207	175	190	80
FQS55.0	12	55	500	90	LB2	0	B13	1	242	175	175	64
FQS55A.0	12	55	500	90	L2	0	B13	1	242	175	190	64
FQS62.0	12	62	600	100	L2	0	B13	1	242	175	190	64
FQS70.0	12	70	620	105	LB3	0	B13	1	278	175	175	60
FQS74.0	12	74	650	110	LB3	0	B13	1	278	175	175	60
FQS74A.0	12	74	650	110	L3	0	B13	1	278	175	190	60
FQS78.0	12	78	750	130	LB3	0	B13	1	278	175	175	60
FQS90.0	12	90	730	150	L5	0	B13	1	354	175	190	48
FQS100.0	12	95	740	160	D31	0	B1	1	304	173	242	48
FQS100.1	12	95	740	160	D31	1	B1	1	304	173	242	48



# ORIGINAL RANGE

# ORIGINAL

Our most complete range, designed to offer maximum coverage. Combining reliability, performance and durability, it guarantees powerful starts in any conditions. Ideal for those looking for a tough, efficient and long-lasting battery, without compromising quality or performance.



## THE BEST QUALITY-PRICE-DURABILITY RATIO

- **Ready to use:** Available in capacities from 45Ah to 110Ah to suit various needs.
- **Advanced grid technology:** Expanded Calcium/Calcium alloy or Matrix Press (Punch) optimizes drivability and endurance.
- **DUPLEX airtight lid with OE plugs:** Centralized degassing system improves safety and performance.
- **High-performance polyethylene envelope separator:** Increased efficiency and short-circuit protection.
- **Reinforced thick plates:** Increased durability and extended performance.
- **180° rotation:** Lossless overturning.
- **Low self-discharge:** Longer storage time without recharging.
- **Explosion-proof safety system:** Additional protection against sparks and fire.
- **Optimized starting power:** Maximum reliability even under extreme conditions.
- **High vibration resistance:** Ideal for demanding terrain and intense driving.
- **Maintenance-free:** Sealed technology for comfort and peace of mind.



OE COVER



MAINTENANCE  
FREE



ANTI  
EXPLOSION



ENVELOPE  
SEPARATOR



ANTI  
VIBRATION



LOW  
SELF-DISCHARGE



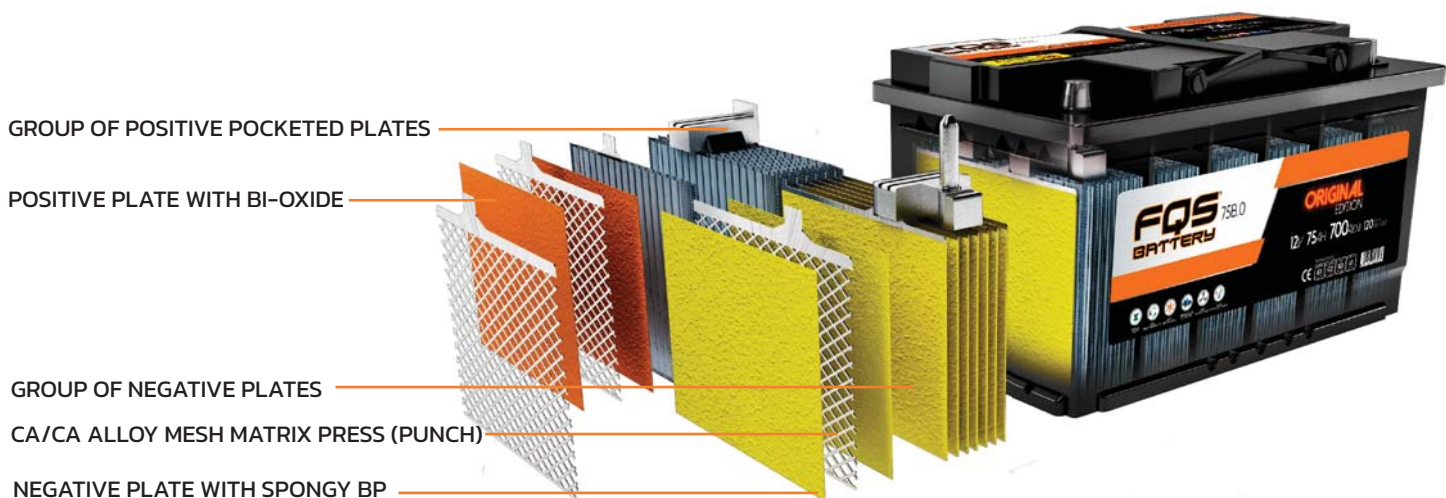
ORIGINAL  
QUALITY

LEGISLATION EN 50342

ENDURANCE <b>E1</b> E1 - E4	CHARGE RETENTION <b>C2</b> C1 - C2	WATER LOSS <b>W3</b> W1 - W5	VIBRATION <b>V2</b> V1 - V4
-----------------------------------	---	---------------------------------------	-----------------------------------

# PURE ENERGY

## REFERENCES



## ORIGINAL RANGE

Reference	Voltage V	Capacity 20h (Ah)	Starting (EN) +/- 6%	Reserv. min a 25A	Box	Polarity	Hold Down	Terminal Type	Dimensions (mm)			Quantity per Pallet
									Length	Width	Height	
FQS45E.0	12	45	360	65	E2	0	B1	1	220	135	225	75
FQS45E.1	12	45	360	65	E2	1	B1	1	220	135	225	75
FQS45C.0	12	50	390	65	L0	0	B13	1	175	175	190	96
FQS45A.0	12	47	420	65	L1	0	B13	1	207	175	190	80
FQS45.0	12	45	420	65	LB1	0	B13	1	207	175	175	80
FQS45.1	12	50	480	65	L1	1	B13	1	207	175	190	80
FQS60A.0	12	60	540	93	L2	0	B13	1	242	175	190	80
FQS60.0	12	60	540	93	LB2	0	B13	1	242	175	175	72
FQS60.1	12	60	540	93	L2	1	B13	1	242	175	190	72
FQS75A.0	12	75	680	120	L3	0	B13	1	278	175	190	64
FQS75B.0	12	75	720	120	LB3	0	B13	1	278	175	175	64
FQS75.1	12	75	680	120	L3	1	B13	1	278	175	190	64
FQS80A.0	12	95	780	150	L4	0	B13	1	310	175	190	48
FQS80B.0	12	85	800	140	LB4	0	B13	1	310	175	175	56
FQS80A.1	12	85	760	140	L4	1	B13	1	310	175	190	56
FQS95.0	12	95	800	150	LB5	0	B13	1	354	175	175	48
FQS95.A	12	95	800	150	L5	0	B13	1	354	175	190	48
FQS95.1	12	95	760	150	L5	1	B13	1	354	175	190	48
FQS110SF.0	12	110	900	195	L6	0	B13	1	392	175	190	36



# ORIGINAL ASIAN RANGE

Our Original Asian range is specifically designed to meet the high standards and technical demands of Asian automobiles. Its advanced technology ensures full compatibility, optimum performance and increased efficiency.



## FULL COVERAGE FOR ASIAN VEHICLES

- **Ready to use:** Available in capacities from 40Ah to 100Ah to suit various needs.
- **Advanced grid technology:** Calcium/Calcium Matrix Press (Punch) alloy optimizes conduction and resistance.
- **Hermetic DUPLEX lid:** Centralized degassing system that improves safety and performance.
- **High-performance polyethylene envelope separator:** Increased efficiency and short-circuit protection.
- **Reinforced thick plates:** Increased durability and prolonged performance.
- **180° rotation:** Lossless overturning.
- **Low self-discharge:** Longer storage time without recharging.
- **Explosion-proof safety system:** Additional protection against sparks and fire.
- **Optimized starting power:** Maximum reliability even under extreme conditions.
- **High vibration resistance:** Ideal for demanding terrain and intense driving.
- **Maintenance-free:** Sealed technology for comfort and peace of mind.
- **Visual charge monitoring:** Allows battery status to be checked at a glance for easier and more efficient maintenance.



OE COVER



MAINTENANCE  
FREE



ANTI  
EXPLOSION



ENVELOPE  
SEPARATOR



ANTI  
VIBRATION



LOW  
SELF-DISCHARGE



MAGIC  
EYE



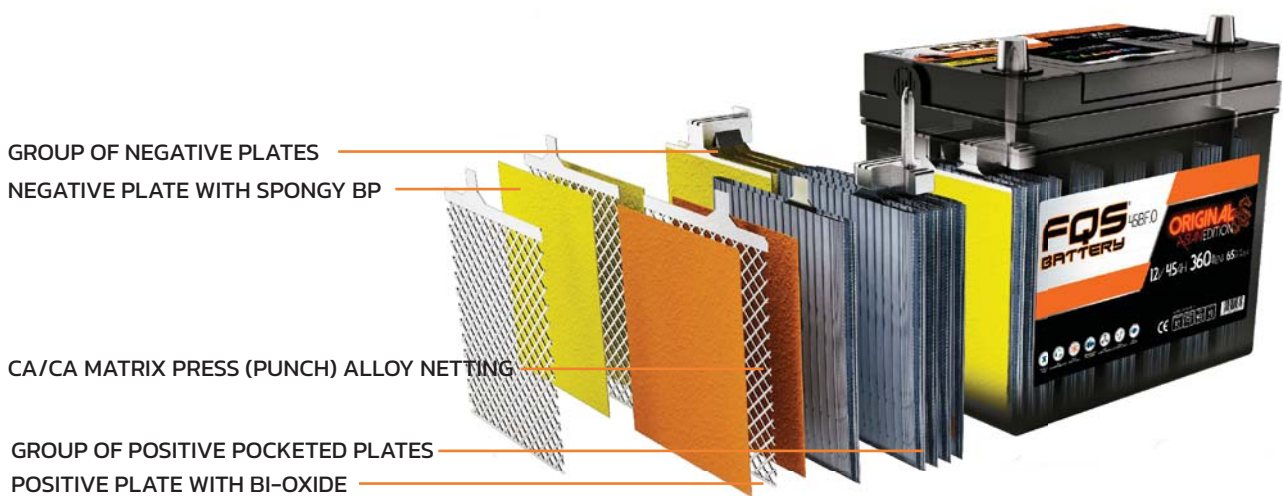
ORIGINAL  
QUALITY

LEGISLATION EN 50342

ENDURANCE <b>E1</b> E1 - E4	CHARGE RETENTION <b>C2</b> C1 - C2	WATER LOSS <b>W3</b> W1 - W5	VIBRATION <b>V3</b> V1 - V4
-----------------------------------	---	---------------------------------------	-----------------------------------

# PURE ENERGY

## REFERENCES



GROUP OF NEGATIVE PLATES  
NEGATIVE PLATE WITH SPONGY BP

CA/CA MATRIX PRESS (PUNCH) ALLOY NETTING

GROUP OF POSITIVE POCKETED PLATES  
POSITIVE PLATE WITH BI-OXIDE



### ORIGINAL ASIAN RANGE

References	Voltage V	Capacity 20h (Ah)	Starting (EN) +/- 6%	Reserv. min a 25A	Box	Polarity	Hold Down	Terminal Type	Dimensions (mm)			Quantity per Pallet
									Length	Width	Height	
FQS40BF.0	12	40	330	55	NS40	0	B1	3	187	131	225	81
FQS40BF.1	12	40	330	55	NS40	1	B0	3	187	127	225	81
FQS45BF.0	12	45	360	65	NS60	0	B0	3	238	129	227	75
FQS45BF.1	12	45	360	65	NS60	1	B0	3	238	129	227	75
FQS50BF.0	12	50	400	70	NS60	0	B1	3	238	134	225	84
FQS62JP.0	12	62	480	90	D23	0	B0	1	232	173	225	60
FQS62JP.1	12	62	480	90	D23	1	B0	1	232	173	225	60
FQS80.0	12	75	720	110	D26	0	B1	1	261	175	220	48
FQS80.1	12	75	720	110	D26	1	B1	1	261	175	220	48
FQS105JP.0	12	100	800	175	D31	0	B1	1	304	173	224	36
FQS105JP.1	12	100	800	175	D31	1	B1	1	304	173	224	36



# PLATINUM RANGE

With a longer life than standard batteries, this battery is the ideal choice for those looking for exceptional performance and increased durability. Designed with advanced technology, it ensures a more efficient and reliable power supply, optimizing the operation of electronic devices. Perfect for demanding applications that require power and endurance.



## MAXIMUM DURABILITY AND PERFORMANCE

- **Ready to use:** Available in capacities from 50Ah to 100Ah to suit various needs.
- **Advanced grid technology:** Calcium/Calcium Matrix Press (Punch) alloy optimizes conductivity and resistance.
- **Hermetic DUPLEX lid:** Centralized degassing system that improves safety and performance.
- **High-performance polyethylene envelope separator:** Increased efficiency and short-circuit protection.
- **Reinforced thick plates:** Increased durability and prolonged performance.
- **180° rotation:** Lossless overturning.
- **Low self-discharge:** Longer storage time without recharging.
- **Explosion-proof safety system:** Additional protection against sparks and fire.
- **Optimized starting power:** Maximum reliability even under extreme conditions.
- **High vibration resistance:** Ideal for demanding terrain and intense driving.
- **Maintenance-free:** Sealed technology for comfort and peace of mind.
- **High-safety sealing plugs:** Prevent leaks and ensure safe, maintenance-free operation.
- **Visual charge monitoring:** Allows battery status to be checked at a glance for easier and more efficient maintenance.
- **+30% optimized performance:** Increased power and efficiency for reliable starting in all conditions.



DOUBLE COVER



MAINTENANCE FREE



ANTI EXPLOSION



ENVELOPE SEPARATOR



ANTI VIBRATION



LOW SELF-DISCHARGE



MAGIC EYE



ORIGINAL QUALITY

LEGISLATION EN 50342

ENDURANCE <b>E1</b> E1 - E4	CHARGE RETENTION <b>C2</b> C1 - C2	WATER LOSS <b>W3</b> W1 - W5	VIBRATION <b>V3</b> V1 - V4
-----------------------------------	--	------------------------------------	-----------------------------------

# PURE ENERGY

## REFERENCES

# 30%+

MAGIC EYE

GROUP OF NEGATIVE PLATES

NEGATIVE PLATE WITH SPONGY BP

CA/CA MATRIX PRESS (PUNCH) ALLOY NETTING

GROUP OF POSITIVE POCKETED PLATES

POSITIVE PLATE WITH BI-OXIDE



## PLATINUM RANGE

References	Voltage V	Capacity 20h (Ah)	Starting (EN) +/- 6%	Reserv. min a 25A	Box	Polarity	Hold Down	Terminal Type	Dimensions (mm)			Quantity per Pallet
									Length	Width	Height	
FQS50PL.O	12	50	430	65	LB1	0	B13	1	207	175	175	80
FQS55PL.O	12	55	530	85	L1	0	B13	1	207	175	190	80
FQS65PL.O	12	65	550	90	LB2	0	B13	1	242	175	175	72
FQS68PL.O	12	68	650	100	L2	0	B13	1	242	175	190	72
FQS77PL.O	12	77	730	130	LB3	0	B13	1	278	175	175	64
FQS85PL.O	12	85	760	130	L3	0	B13	1	278	175	190	64
FQS88PL.O	12	88	850	150	LB4	0	B13	1	310	175	175	56
FQS95PL.O	12	95	850	160	L4	0	B13	1	310	175	190	56
FQS100PL.O	12	100	900	175	L5	0	B13	1	354	175	190	48



# EFB START-STOP RANGE

STAR STOP

Our EFB range is designed for equipment with advanced electronics. The EFB (Enhanced Flooded Battery) offers exceptionally reliable performance in applications requiring high energy demand. Its robustness and ability to withstand extreme conditions make it the ideal solution to ensure a continuous and efficient power supply.

**Vehicles with Start-Stop technology without regenerative braking require high-performance batteries, such as the EFB (Enhanced Flooded Battery) range.**

## EFB TECHNOLOGY

- Result of the improvement and adaptation of conventional batteries.
- Optimum for vehicles with basic Start-Stop system
- Suitable for non-Start-Stop vehicles with demanding driving requirements
- x3 times higher cycling performance than conventional batteries.
- Withstand hard engine starts and long idle times.
- Improved thermal stability for use in warm engines and climates.

### CYCLING BEHAVIOR



DOUBLE COVER



MAINTENANCE FREE



ANTI EXPLOSION



ENVELOPE SEPARATOR



ANTI VIBRATION



LOW SELF-DISCHARGE



START STOP



POWER ON BOARD



ORIGINAL QUALITY

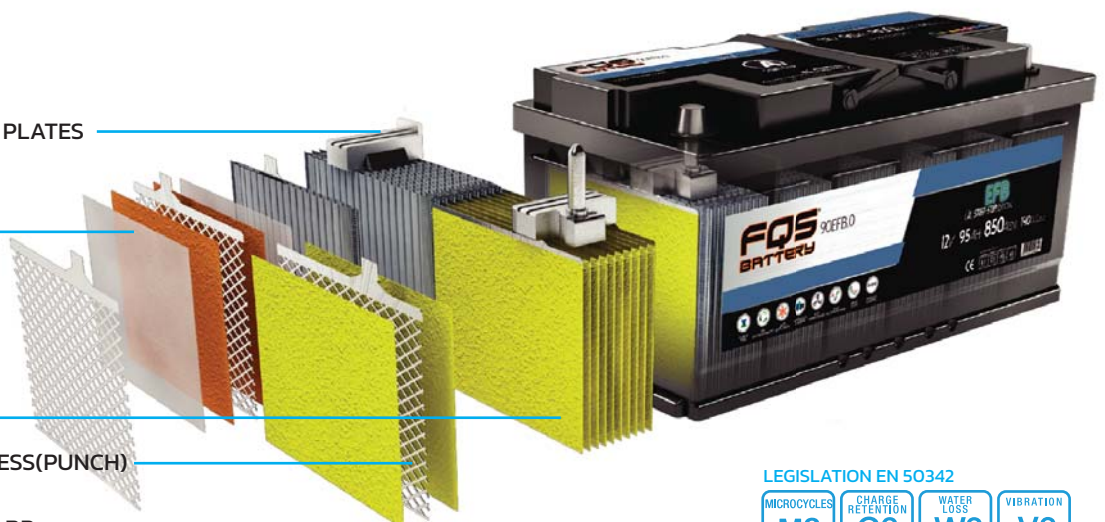
GROUP OF POSITIVE POCKETED PLATES

POSITIVE PLATE WITH BI-OXIDE AND GLASS FIBER

GROUP OF NEGATIVE PLATES

CA/CA ALLOY MESH MATRIX PRESS(PUNCH)

NEGATIVE PLATE WITH SPONGY BP



LEGISLATION EN 50342

M2  
M1-M3

C2  
C1 - C2

W3  
W1 - W5

V3  
V1 - V4

## REFERENCES



# EFB



## EFB RANGE

References	Voltage V	Capacity 20h (Ah)	Starting (EN) +/- 6%	Reserv. min a 25A	Box	Polarity	Hold Down	Terminal Type	Dimensions (mm)			Quantity per Pallet
									Length	Width	Height	
FQS50EFB.0	12	50	450	70	L1	0	B13	1	207	175	190	80
FQS60EFB.0	12	60	640	90	L2	0	B13	1	242	175	190	72
FQS70BEFB.0	12	70	700	110	LB3	0	B13	1	278	175	175	64
FQS72EFB.0	12	70	760	110	L3	0	B13	1	278	175	190	64
FQS80BFEB.0	12	80	750	150	LB4	0	B13	1	310	175	175	56
FQS80EFB.0	12	80	780	150	L4	0	B13	1	310	175	190	56
FQS90EFB.0	12	95	850	170	L5	0	B13	1	354	175	190	48
FQS60JPEFB.0	12	60	520	90	D23	0	B0	1	232	173	225	64
FQS60JPEFB.1	12	60	520	90	D23	1	B0	1	232	173	225	64
FQS80JPEFB.0	12	80	700	120	D26	0	B1	1	261	175	220	64
FQS80JPEFB.1	12	80	700	120	D26	1	B1	1	261	175	220	64
FQS105JPEFB.0	12	100	760	175	D31	0	B0	1	306	173	225	48
FQS105JPEFB.1	12	100	760	175	D31	1	B0	1	306	173	225	48

At FQS Battery we recommend always replacing the battery using the technology recommended by the vehicle manufacturer.



# AGM START-STOP RANGE

STAR STOP

Our AGM (Absorbent Glass Mat) batteries are designed for vehicles with advanced Start-Stop technology with regenerative braking and those requiring high electrical demand. Thanks to their innovative absorbent glass fiber construction, these batteries offer superior performance.

Designed to withstand continuous discharges and recharges, typical of the Start-Stop system with regenerative braking. Our technology enables superior performance, ensuring greater durability and energy efficiency.

## AGM TECHNOLOGY

- Ideal for modern high-powered vehicles
- Suitable for Start-Stop vehicles with regenerative braking
- x5 times longer lasting than conventional batteries
- Maximize fuel efficiency
- High cycling resistance
- Maximum charge acceptance
- Increased depth of discharge

### CYCLING BEHAVIOR



Unlike conventional batteries, AGM batteries can withstand up to 5 times more charge and discharge cycles, maintaining stable performance over time.



DOUBLE COVER



MAINTENANCE FREE



ANTI EXPLOSION



ENVELOPE SEPARATOR



ANTI VIBRATION



LOW SELF-DISCHARGE



START STOP



POWER ON BOARD



HERMETIC COVER



ORIGINAL QUALITY

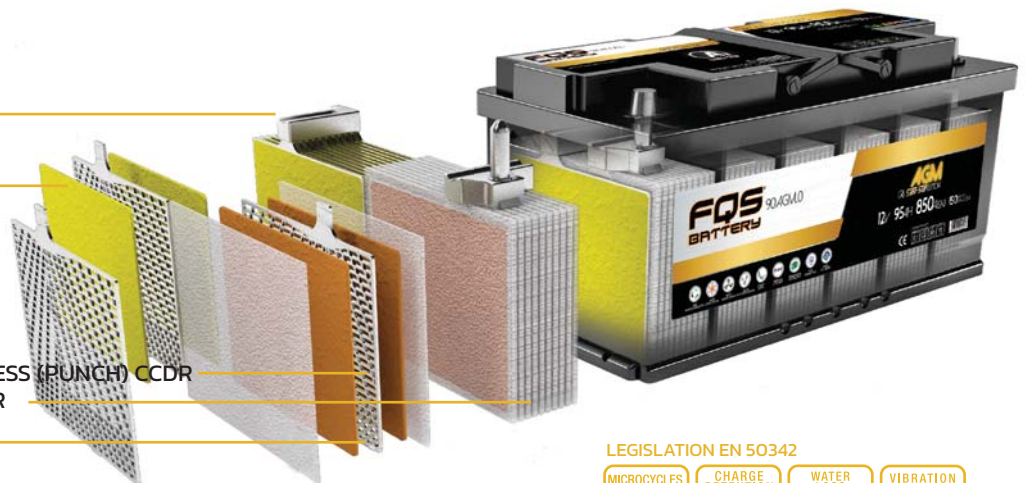
GROUP OF NEGATIVE PLATES

NEGATIVE PLATE WITH SPONGY BP

PB/CA/AG ALLOY CAST MESH MATRIX PRESS (PUNCH) CDDR  
POSITIVE PLATE GROUP WITH SEPARATOR

POSITIVE PLATE WITH BI-OXIDE  
AND SEPARATOR

SEPARATED FROM FIBERGLASS



LEGISLATION EN 50342

MICROCYCLES <b>M3</b> M1-M3	CHARGE RETENTION <b>C2</b> C1 - C2	WATER LOSS <b>W4</b> W1 - W5	VIBRATION <b>V3</b> V1 - V4
-----------------------------------	--	------------------------------------	-----------------------------------

# PURE ENERGY

## REFERENCES

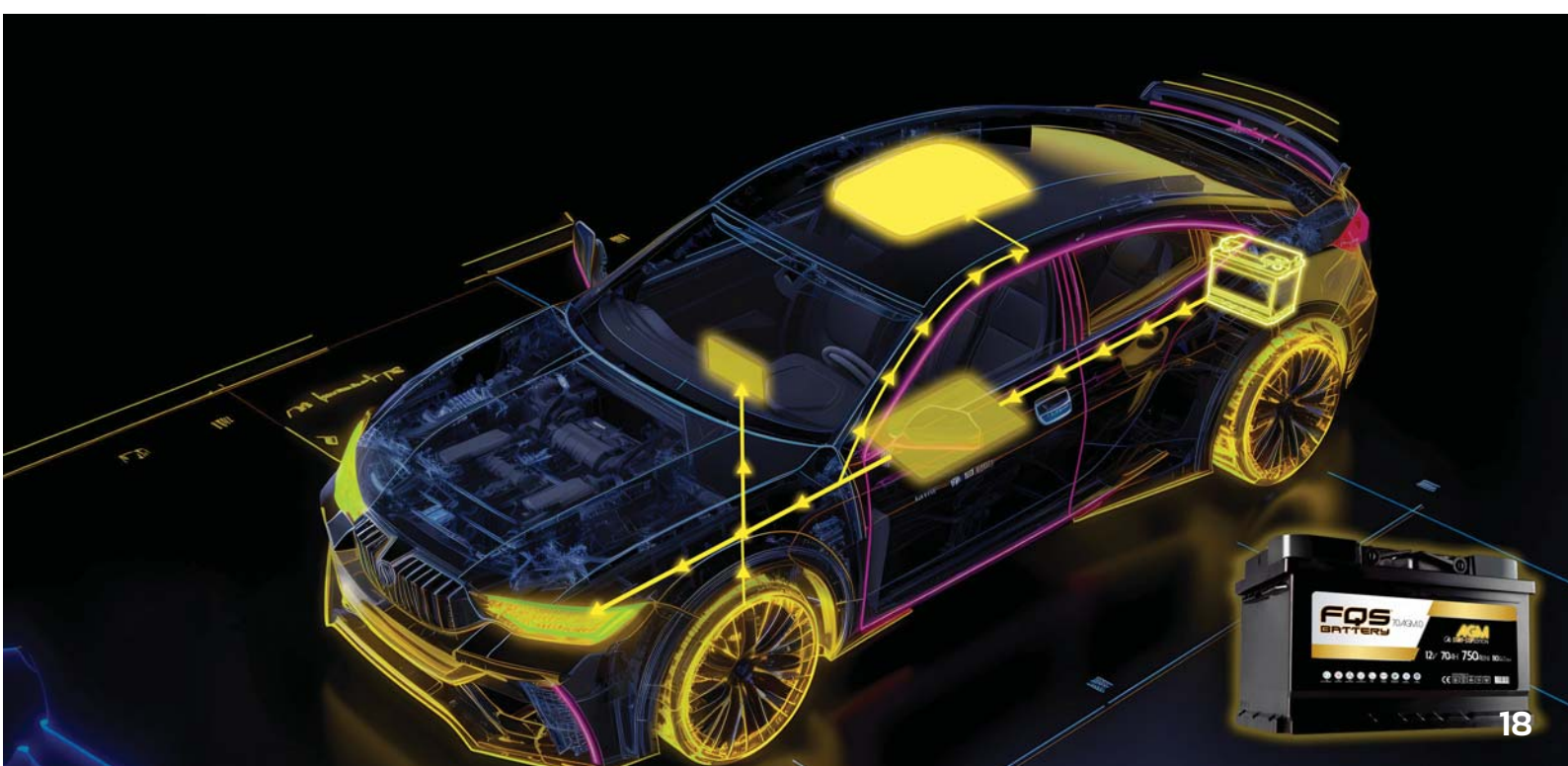


# AGM

## AGM RANGE

References	Voltage V	Capacity 20h (Ah)	Starting (EN) +/- 6%	Reserv. min a 25A	Box	Polarity	Hold Down	Terminal Type	Dimensions (mm)			Quantity per Pallet
									Length	Width	Height	
FQS45BFAGM.0	12	45	370	65	NS60	0	B0	1	238	129	225	80
FQS45BFAGM.1	12	45	370	65	NS60	1	B0	1	238	129	225	80
FQS60AGM.0	12	60	640	93	L2	0	B13	1	242	175	190	54
FQS70AGM.0	12	70	750	120	L3	0	B13	1	278	175	190	48
FQS80AGM.0	12	80	810	130	L4	0	B13	1	310	175	190	42
FQS90AGM.0	12	95	850	150	L5	0	B13	1	354	175	190	36
FQS100AGM.0	12	105	950	175	L6	0	B13	1	392	175	190	36

Our recommendation is to always replace the battery with the same technology as the original battery, since, despite the fact that the AGM battery is a superior technology and has more features than the EFB, it is not recommended in spaces subject to high temperatures, such as the engine compartment. The charging voltage of the alternator must also be taken into account.



# GRID TECHNOLOGY

The plate grid is the main component of the lead-acid battery.

It is the skeleton of the electrode to collect the current and conduct it so that the current distribution is more uniform and support the active material, besides being also the carrier of the active material.

At FQS we incorporated a new grid design, adapted to the new vehicles to meet the needs of our customers, thus offering a quality product.

The new grid, the CCCR (Continuous casting direct rolling) has the following characteristics:



- Precise thickness control.
- Calendered grain structure.
- Flexible design with full frame.



The advantages that we can find with this new design are multiple:

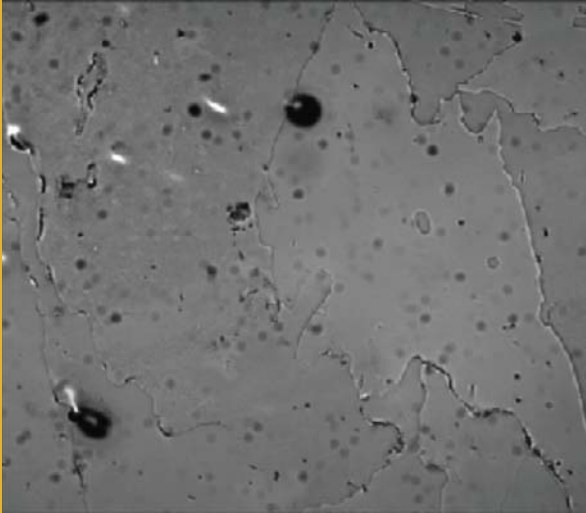
- Reduces corrosion.
- Extends battery life.
- Increases conductivity.
- High production capacity.
- Saves energy, thus contributing to the environment.



The unique grid structure not only reinforces the strong adhesion of the lead paste, but also enlarges the contact area, thus extending the life of the battery.

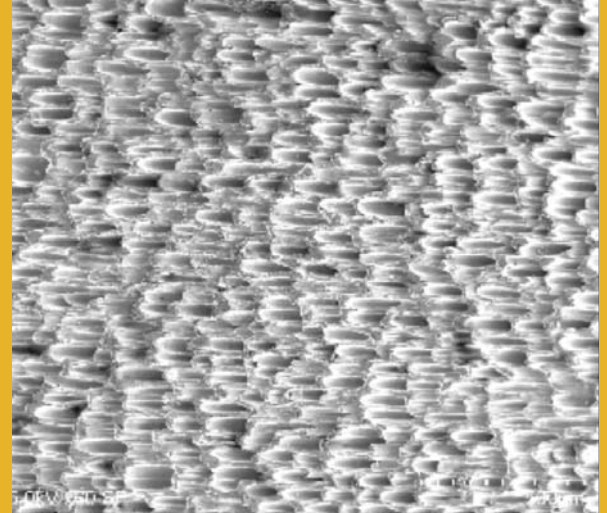
# MICROSTRUCTURE

## STANDARD GRID



VS

## CCDR GRID



The traditional casting grid has an uneven cooling rate, which causes the grains on the surface of the lead plate to be finer, while those on the core are coarser. This variation favors segregation, decreases toughness and increases the risk of cracking during rolling or cold deformation.

In the CCDR grating it can be seen under the microstructure, which shows a dense alloy and texture in an orderly manner, and almost without pores, traces of lead, shrinkage, cracks, etc.

# NUEVO DISEÑO



The new packaging of our AGM batteries is designed to offer greater protection, cleanliness, ease of handling and a more modern presentation. This new packaging design, more in line with a premium range, reflects the quality and advanced technology that characterizes our batteries.

Include instructions for coding the power management system (BEM).



# OUR RANGES

## INDUSTRIAL VEHICLE



### ORIGINAL RENGÉ

- AGRICULTURAL AND INDUSTRIAL VEHICLES
- CAPACITY FROM 105AH TO 240AH
- PB/ANTIMONY ALLOY CAST GRID
- REINFORCED THICK PLATES
- MINIMUM SELF-DISCHARGE
- EXCELLENT LOAD ACCEPTANCE
- HIGH PERFORMANCE AND CYCLIC LIFE
- VIBRATION RESISTANT
- LOW MAINTENANCE



### SHD RANGE

- HEAVY TRANSPORT
- CAPACITY FROM 145AH TO 240AH
- CAST CALCIUM/CALCIUM ALLOY GRID MATRIX PRESS (PUNCH)
- REINFORCED THICK PLATES
- 180° TURN WITHOUT ELECTROLYTE LOSS
- MINIMUM SELF-DISCHARGE
- EXCELLENT LOAD ACCEPTANCE
- HIGH PERFORMANCE AND CYCLIC LIFE
- MAXIMUM VIBRATION RESISTANCE
- MAINTENANCE-FREE
- HIGH STARTING CURRENT
- BUILT-IN ANTI-EXPLOSION SYSTEM
- SEALED LID WITH CENTRALIZED DEGASSING
- POLYETHYLENE ENVELOPE SEPARATOR WITH GLASS FIBER
- INTERNAL CIRCUIT BY MEANS OF A LABYRINTH IN THE UPPER COVER FOR GAS RECOMBINATION
- LOAD INDICATOR CONTROL

# OUR RANGES

## INDUSTRIAL VEHICLE



### EFB RANGE

- STATE-OF-THE-ART HEAVY HAULAGE
- 180AH TO 225AH CAPACITY
- CAST CALCIUM/CALCIUM ALLOY GRID MATRIX PRESS (PUNCH)
- REINFORCED THICK PLATES
- 180° TURN WITHOUT ELECTROLYTE LOSS
- MINIMUM SELF-DISCHARGE
- HIGHER LOAD ACCEPTANCE
- HIGH PERFORMANCE AND CYCLIC LIFE
- MAXIMUM VIBRATION RESISTANCE
- MAINTENANCE-FREE
- HIGH STARTING CURRENT
- BUILT-IN ANTI-EXPLOSION SYSTEM
- DOUBLE SEALED LID WITH CENTRALIZED DEGASSING
- FIBERGLASS SEPARATOR
- INTERNAL CIRCUIT BY MEANS OF A LABYRINTH IN THE UPPER COVER FOR GAS RECOMBINATION
- LOAD INDICATOR CONTROL



### AGM RANGE

- STATE-OF-THE-ART HEAVY-DUTY VEHICLE
- 180AH TO 230AH CAPACITY
- CAST PB/CALCIUM/SILVER ALLOY GRID
- REINFORCED THICK PLATES
- INSTALLATION IN MULTIPLE POSITIONS
- MINIMUM SELF-DISCHARGE
- BETTER LOAD ACCEPTANCE IN EXTREME CONDITIONS
- HIGH PERFORMANCE AND CYCLIC LIFE
- MAXIMUM VIBRATION RESISTANCE
- MAINTENANCE-FREE
- HIGHER STARTING POWER
- BUILT-IN ANTI-EXPLOSION SYSTEM
- SEALED COVER
- FIBERGLASS SEPARATOR
- VALVE-REGULATING GASIFICATION
- HIGH RESISTANCE TO INTENSE DISCHARGES

# ORIGINAL RANGE

# ORIGINAL

Our Original range is designed for heavy transport. This range of batteries combines power, endurance and excellent value for money. Built to withstand long days and demanding conditions, it ensures reliable performance on every journey, offering safe starts, longer life and minimal maintenance. The ideal solution for high-performance industrial vehicles



## PERFECT BALANCE BETWEEN QUALITY AND PRICE

- **Ready to use:** Available in capacities from 105Ah to 240Ah to suit various needs.
- **Lead/Antimony fused grid technology:** Increased strength and durability in demanding conditions.
- **Reinforced thick plates:** Increases service life and energy efficiency.
- **High performance and long cyclic life:** Ideal for high-drain, heavy-duty applications.
- **Vibration resistant:** For agricultural vehicles and conventional heavy transport.
- **Low self-discharge:** Maintains the load longer, even during periods of inactivity.
- **Low maintenance:** Greater convenience and reliability without the need for constant servicing.
- **Excellent charge acceptance:** Fast and efficient recharging to maximize performance.



MAINTENANCE FREE



ANTI EXPLOSION



ENVELOPE SEPARATOR



ANTI VIBRATION



LOW SELF-DISCHARGE



ORIGINAL QUALITY

GROUP OF NEGATIVE PLATES

NEGATIVE PLATE WITH SPONGY BP

PB/SB ALLOY CAST MESH

GROUP OF POSITIVE POCKETED PLATES

POSITIVE PLATE WITH BI-OXIDE AND SEPARATOR




LEGISLATION EN 50342



# PURE ENERGY

## REFERENCES

 <b>ORIGINAL V.I RANGE</b>												
References	Voltage V	Capacity 20h (Ah)	Starting (EN) +/- 6%	Reserv. min a 25A	Box	Polarity	Hold Down	Terminal Type	Dimensions (mm)			Quantity per Pallet
									Length	Width	Height	
FQS100BC.1	12	105	850	175	-	1	B0	1 + M	330	170	230	24
FQS110.0	12	110	760	185	98 COMP	0	B0	1	343	175	232	24
FQS110.1	12	110	850	200	98 COMP	1	B0	1	343	175	232	24
FQS110T.0	12	110	850	200	98 COMP	0	B1	1	343	175	232	24
FQS140.3	12	140	950	270	A	3	B0	1	513	190	223	24
FQS140.4	12	140	950	270	MAC120	4	B3	1	508	175	228	24
FQS135.3	12	140	1020	270	MAC110C	3	B3	1	513	175	201	24
FQS137S.1	12	140	1020	270	MAC140	1	B0	1	509	210	209	21
FQS140JD.0	12	140	1120	270	MAT132	0	B1	1	508	175	205	24
FQS148.0	12	135	920	250	127 COMP	0	B0	1	343	175	283	24
FQS148.1	12	135	920	250	127 COMP	1	B0	1	343	175	283	24
FQS165.0	12	140	950	260	D	0	B0	1	354	241	285	18
FQS165NATO.2	12	125	1000	230	EL110 NATO	2	B0	1	280	267	231	32
FQS180.3	12	180	1050	350	B	3	B0	1	513	223	223	21
FQS180.4	12	180	1050	350	B	4	B0	1	513	223	223	21
FQS180T.4	12	180	1050	350	B	4	B13	1	513	223	223	21
FQS230.3	12	225	1250	480	C	3	B0	1	518	273	242	18
FQS230.4	12	225	1200	480	C	4	B0	1	518	273	242	18
FQS240.3	12	240	1400	580	C	3	B0	1	518	273	242	18
FQS240.4	12	240	1400	580	C	4	B0	1	518	273	242	18

**FOR THE MOST  
DEMANDING TRANSPORT**



# SUPER HEAVY DUTY RANGE

# SHD

Our SHD range is specifically designed for heavy transport vehicles. This range offers exceptional performance even in the most demanding conditions. Its advanced technology guarantees increased durability, resistance to extreme vibrations and optimum power to ensure reliable starting at all times.



## MAXIMUM POWER AND VIBRATION RESISTANCE

- **Ready to use:** Available in capacities from 145Ah to 240Ah to suit various needs.
- **Calcium / Calcium MATRIX PRESS (PUNCH) grid technology:** Increased strength and durability in demanding conditions.
- **Reinforced plate thickness:** Increases service life and energy efficiency.
- **High performance and long cyclic life:** Ideal for high consumption and intensive use applications.
- **High vibration resistance:** For vehicles subjected to extreme conditions, such as those supported on the first drive axle (fifth wheel).
- **Low self-discharge:** Maintains the load longer, even during periods of inactivity.
- **Sealed maintenance-free (SMF):** Greater comfort and reliability without the need for revisions.
- **Sealed lid with centralized degassing system:** Greater safety and efficiency in gas management.
- **Fiberglass polyethylene separator:** Optimizes performance and extends battery life.
- **High starting power:** Maximum reliability even under extreme conditions.
- **Explosion-proof safety system:** Advanced spark and ignition protection.
- **Gas recombination technology:** Minimizes evaporation and reduces water loss, increasing durability.
- **Charge indicator control:** Allows battery status to be checked at a glance for easier and more efficient maintenance.



MAINTENANCE  
FREE



ANTI  
EXPLOSION



ENVELOPE  
SEPARATOR



ANTI  
VIBRATION



LOW  
SELF-DISCHARGE



MAGIC  
EYE



ORIGINAL  
QUALITY

LEGISLATION EN 50342

ENDURANCE <b>E1</b> E1 - E4	CHARGE RETENTION <b>C2</b> C1 - C2	WATER LOSS <b>W3</b> W1 - W5	VIBRATION <b>V4</b> V1 - V4
-----------------------------------	---	---------------------------------------	-----------------------------------

# PURE ENERGY

## REFERENCES

RECOMBINATION OF GASES WITHOUT ELECTROLYTE LOSS

EXPLOSION-PROOF TABLET

POLYPROPYLENE ANTI-VIBRATION DEVICE

GROUP OF POSITIVE POCKETED PLATES

POSITIVE PLATE WITH BI-OXIDE AND GLASS FIBER

GROUP OF NEGATIVE PLATES

NEGATIVE PLATE WITH SPONGY BP

CA/CA MATRIX PRESS (PUNCH) GRID



## SHD V.I RANGE

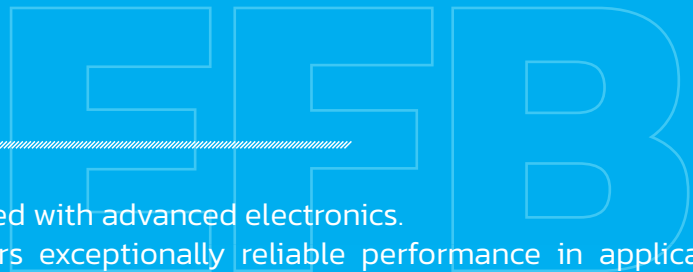
References	Voltage V	Capacity 20h (Ah)	Starting (EN) +/- 6%	Reserv. min a 25A	Box	Polarity	Hold Down	Terminal Tipo	Dimensions (mm)			Quantity per Pallet
									Length	Width	Height	
FQS145SHD.3	12	145	950	270	A	3	B00	1	513	190	223	24
FQS190SHD.3	12	190	1200	360	B	3	B00	1	513	223	223	21
FQS240SHD.3	12	240	1300	490	C	3	B00	1	513	275	242	18

# V4

## RESISTANT TO EXTREME VIBRATIONS



# EFB RANGE



Our EFB range is designed for trucks equipped with advanced electronics. The EFB (Enhanced Flooded Battery) offers exceptionally reliable performance in applications requiring high energy demand. Its robustness and ability to withstand extreme conditions make it the ideal solution to ensure a continuous and efficient supply.



## SUPERIOR PERFORMANCE FOR STATE-OF-THE-ART TRANSPORT GENERATION

- **Ready to use:** Available in capacities from 180Ah to 225Ah to suit various needs.
- **Calcium / Calcium MATRIX PRESS (PUNCH) grid technology:** Increased strength and durability in demanding conditions.
- **High-performance fiberglass separator:** Improves efficiency and extends battery life.
- **Increased resistance to charge and discharge cycles:** Ensures consistent performance over time.
- **High charge acceptance:** Faster and more efficient recharge, optimizing battery usage.
- **Fused grid technology:** Provides higher conductivity and durability in demanding conditions.
- **Maximum vibration resistance:** For vehicles subjected to extreme conditions, such as those endured in the first drive axle (fifth wheel).
- **Double sealed cover:** Advanced leak protection and increased safety.
- **Reliable power supply:** Constant and stable power for uninterrupted performance.
- **Gas recombination system:** Reduces water loss and improves overall efficiency.
- **Charge indicator control:** Allows battery status to be checked at a glance for easier and more efficient maintenance.



DOUBLE COVER



MAINTENANCE FREE



ANTI EXPLOSION



ENVELOPE SEPARATOR



ANTI VIBRATION



LOW SELF-DISCHARGE



START STOP



POWER ON BOARD



MAGIC EYE



ORIGINAL QUALITY

LEGISLATION EN 50342

ENDURANCE <b>E1</b> E1 - E4	CHARGE RETENTION <b>C2</b> C1 - C2	WATER LOSS <b>W3</b> W1 - W5	VIBRATION <b>V4</b> V1 - V4
-----------------------------------	--	------------------------------------	-----------------------------------

# REFERENCES

GAS RECOMBINATION WITHOUT ELECTROLYTE LOSS

EXPLOSION-PROOF TABLET

ANTI-VIBRATION POLYPROPYLENE INSERT

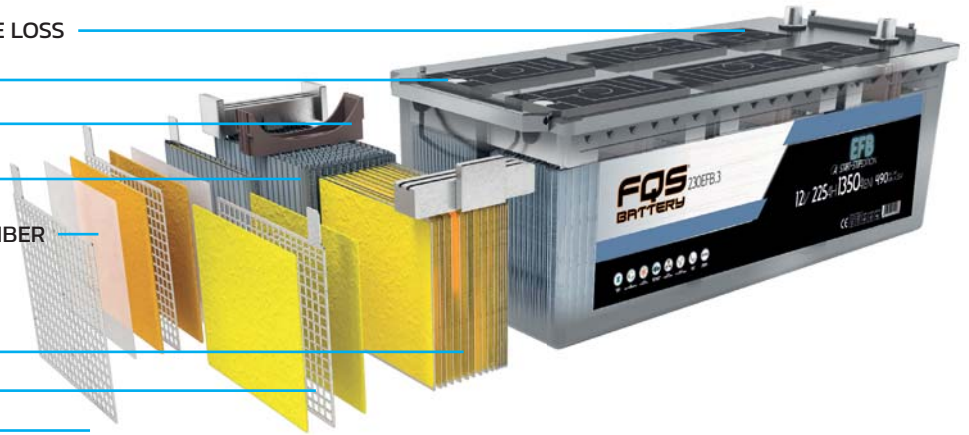
GROUP OF POSITIVE POCKETED PLATES

POSITIVE PLATE WITH BI-OXIDE AND GLASS FIBER

GROUP OF NEGATIVE PLATES

NEGATIVE PLATE WITH SPONGY BP

CA/CA MATRIX PRESS (PUNCH) GRID



## FQS BATTERY EFB V.I RANGE

References	Voltage V	Capacity 20h (Ah)	Starting (EN) +/- 6%	Reserv. min a 25A	Box	Polarity	Hold Down	Terminal Type	Dimensions (mm)			Quantity per Pallet
									Length	Width	Height	
FQS180EFB.3	12	180	1150	360	B	3	B0	1	513	223	223	21
FQS230EFB.3	12	225	1350	490	C	3	B0	1	518	273	242	18



# AGM RANGE

Our AGM range is designed for international transport where overnight stays in the cabin are required and for those users who use a large amount of electronic power when the engine is not running. Thanks to their advanced design and state-of-the-art technology, these batteries guarantee greater durability, resistance to extreme cycles and high starting power, even in the most adverse conditions. Their robust construction and high vibration resistance ensure a reliable and efficient power supply, minimizing downtime and maximizing productivity.



## THE MOST COMPLETE SOLUTION FOR SPECIALIZED APPLICATIONS

- **Ready to use:** Available in capacities from 180Ah to 225Ah to suit various needs.
- **Lead/Calcium/Silver fused grid technology:** Increased strength and durability in demanding conditions.
- **Reinforced plate thickness:** Increases service life and energy productivity.
- **High performance and long cyclic life:** Ideal for high consumption and intensive use applications.
- **Maximum vibration resistance:** For vehicles subjected to extreme conditions, such as those supported on the first drive axle (fifth wheel).
- **Installation in any position:** Lossless design for greater versatility.
- **Low self-discharge:** Holds the load longer, even during periods of inactivity.
- **Maintenance-free:** Greater convenience and reliability without the need for constant servicing.
- **Excellent charge acceptance:** Fast and efficient recharge to maximize performance.



DOUBLE COVER



MAINTENANCE FREE



ANTI EXPLOSION



ENVELOPE SEPARATOR



ANTI VIBRATION



LOW SELF-DISCHARGE



START STOP



POWER ON BOARD



HERMETIC COVER



ORIGINAL QUALITY

VALVE REGULATED SYSTEM (VRLA)

GROUP OF NEGATIVE PLATES

ANTI-VIBRATION POLYPROPYLENE INSERT

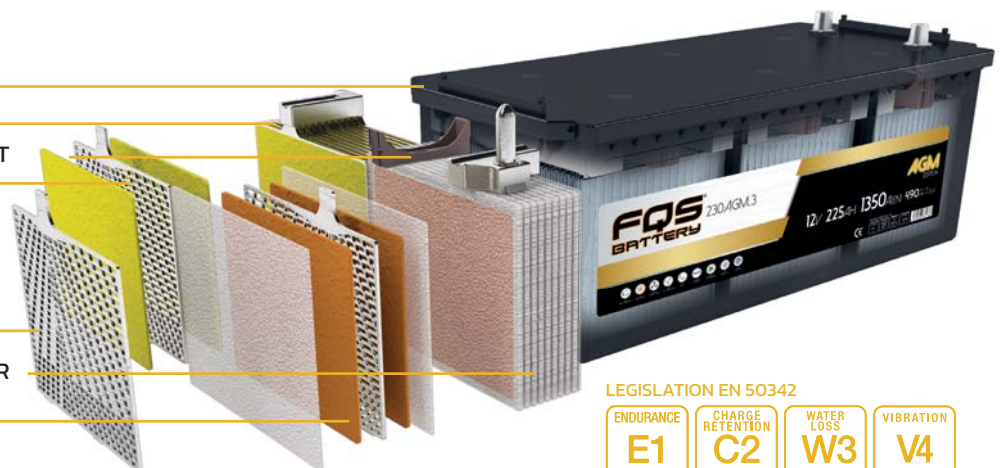
NEGATIVE PLATE WITH SPONGY BP

CAST MESH IN PB/CA/AG ALLOY

POSITIVE PLATE GROUP WITH SEPARATOR

POSITIVE PLATE WITH BI-OXIDE AND SEPARATOR

FIBERGLASS SEPARATOR



LEGISLATION EN 50342

ENDURANCE <b>E1</b> E1 - E4	CHARGE RETENTION <b>C2</b> C1 - C2	WATER LOSS <b>W3</b> W1 - W5	VIBRATION <b>V4</b> V1 - V4
-----------------------------------	--	------------------------------------	-----------------------------------

# PURE ENERGY

## REFERENCES

### FQS BATTERIES **AGM V.I RANGE**

References	Voltage V	Capacity 20h (Ah)	Starting (EN) +/- 6%	Reserv. min a 25A	Box	Polarity	Hold Down	Terminal Type	Dimensions (mm)			Quantity per Pallet
									Length	Width	Height	
FQS180 AGM.3	12	180	1150	360	B	3	B0	1	513	223	223	21
FQS230 AGM.3	12	225	1350	490	C	3	B0	1	518	273	242	18

Our recommendation is to always replace the battery with the same technology as the original battery, since, despite the fact that the AGM battery is a superior technology and has more features than the EFB, it is not recommended in spaces subject to high temperatures, such as the engine compartment. The charging voltage of the alternator must also be taken into account.



**LONG LIFE**



**NO NEED TO  
RECHARGE**



**OPERATE UP TO 12  
HOURS**

# CLASSIC VEHICLE

Classic car batteries combine vintage design with modern technology to ensure compatibility, durability and reliability. They are adapted to older electrical systems, require little maintenance and ensure safe starting, even after long periods of inactivity.



## CLASSIC VEHICLE

References	Voltage V	Capacity 20h (Ah)	Starting (EN) +/- 6%	Reserv. min a 25A	Box	Polarity	Hold Down	Terminal Type	Dimensions (mm)			Quantity per Pallet
									Length	Width	Height	
FQS66S.0	6	66	500	-	66 6V	1	B4	1	180	175	185	72
FQS77S.0	6	77	650	-	77 6V	1	B1/B6	1	215	168	184	72
FQS84S.0	6	84	480	-	M1 6V	1	B0	1	158	165	220	96
FQS140S.0	6	140	1000	-	M4 6V	0	B1	1	260	175	236	54
FQS160S.0	6	160	1090	-	M5 6V	0	B0	1	330	171	235	42

# AUX

Batteries specially designed for auxiliary power supply in vehicles. These batteries are capable of maintaining the demand of all electronic systems of the vehicle. Hermetically sealed to ensure safety without loss of electrolyte.



## AUX

References	Voltage V	Capacity 20h (Ah)	Starting (EN) +/- 6%	Hold Down	Box	Terminal Type	Dimensions (mm)			Quantity per Pallet
							Length	Width	Height	
AUX1	12	35	520	0	B13	1	212	175	140	72
AUX2	12	15	200	1	B0	3	150	90	145	120
AUX3	12	1.2	-	3	-	1	97	43	52	-
AUX4	12	8	135	1	-	-	150	87	105	-
AUX5	12	12	200	1	-	-	150	87	146	-
AUX6	12	33	-	1	-	T6	196	130	170	-

# GARDEN LEISURE TIME

Free-time batteries provide constant, long-lasting power for vehicles and equipment that require an independent source, such as garden vehicles. Unlike starting batteries, they withstand deep discharges and frequent recharges without loss of performance. Their main advantages include long life, stable power supply, high endurance and minimal maintenance.



## LEISURE TIME

References	Voltage V	Capacity 20h (Ah)	Starting (EN) +/- 6%	Reserv. min a 25A	Box	Polarity	Hold Down	Terminal Type	Dimensions (mm)			Quantity per Pallet
									Length	Width	Height	
FQS28.0	12	24	230	35	28 UN	0	B0	4	187	77	168	144
FQS30.0	12	30	300	42	28 UN	0	B0	4	187	128	167	144
FQS30.1	12	30	300	42	28 UN	1	B0	4	187	128	167	144
FQS32.0	12	32	300	42	32 UN	0	B0	4	233	131	167	96



## LEISURE TIME GARDEN LITIO

References	Voltage	Capacity C10	Watts(Wh)	Starting CCA	Polarity	Dimensions (mm)		
						Length	Width	Height
FLIU1Q-FP	12	18	216	210	- / +	167	124	163
FLII2-18-FP	12	18	216	210	- / +	181	77	170

# STARTER BATTERIES

These batteries excel in extreme temperature environments and demanding applications such as starters. They are capable of supplying power to multiple devices while maintaining high cranking power.



## STARTER BATTERIES

References	Voltage V	Capacity 20h (Ah)	Starting (EN) +/- 6%	Reserv. min a 25A	Box	Polarity	Hold Down	Terminal Type	Dimensions (mm)			Quantity per Pallet
									Length	Width	Height	
FQS16PP.0	12	16	520	-	M6	0	B0	M	182	77	168	-
GEL12-22	12	22	210	-	M6	0	B0	M	182	77	168	-
FQS1200A	12	28	1200	-	-	1	B0	4	187	128	167	-
FQS1230A	12	30	450	60	M6	0	B0	M	250	97	142	-

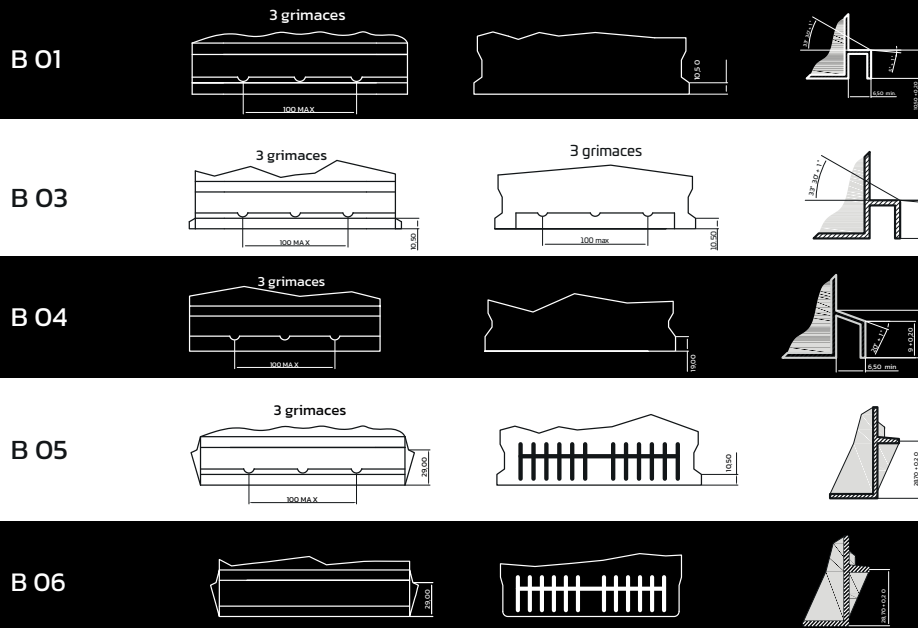
# PURE

## FASTENINGS

## TYPE OF TERMINAL

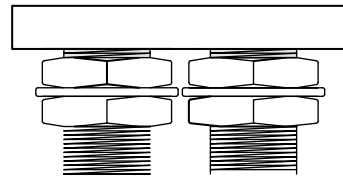
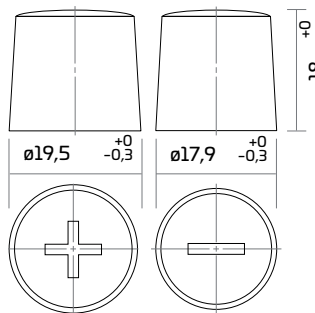
B 00

Without base support

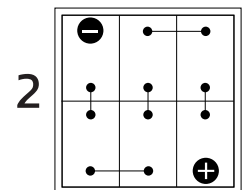
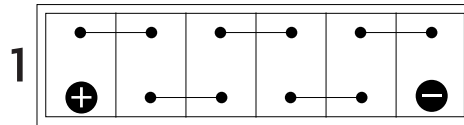
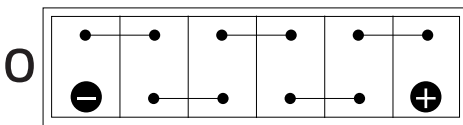


TERMINAL 1

TERMINAL 2



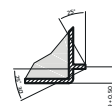
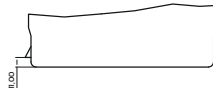
M



# TERMINALS

# POLARITY SCHEME

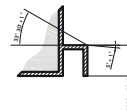
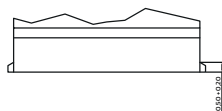
B 07



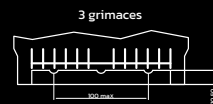
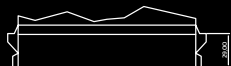
B 09



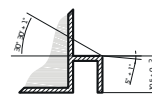
B 11



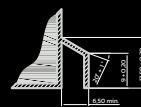
B 12



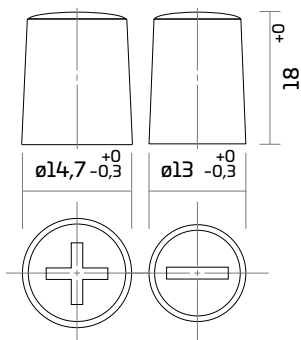
B 13



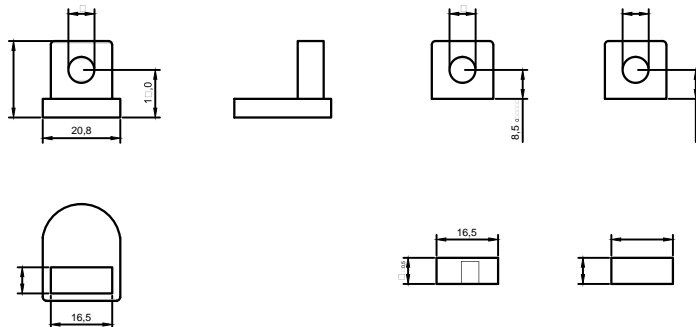
B 14



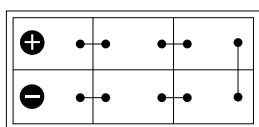
TERMINAL 3



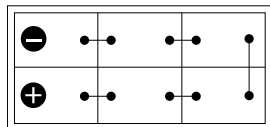
TERMINAL 4



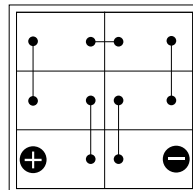
3



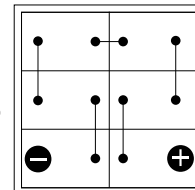
4



5



6



# FQS<sup>®</sup>

## BATTERY



**NEW BATTERY DESIGN  
MAXIMUM POWER**



[www.fqsbattery.com](http://www.fqsbattery.com)



# OUR RANGES

## MOTORCYCLE



### CONVENTIONAL



- FOR STANDARD POWER APPLICATIONS
- CAPACITY FROM 4 TO 30AH
- WITHOUT HERMETIC SEALING
- VERTICAL ASSEMBLY ONLY
- LONG SERVICE LIFE
- ACTIVATE BEFORE USE
- DRY LOADING
- ACID PACK INCLUDED

### AGM



- MOST MOTORCYCLES AND SCOOTERS
- CAPACITY FROM 2.3 TO 22AH
- SPECIAL SEALING AGAINST CORROSION AND LEAKS
- AGM TECHNOLOGY WITH UP TO 45° TILT
- HIGH STARTING POWER
- ACTIVATE BEFORE USE
- AGM DRY LOADING
- ACID PACK INCLUDED
- MAINTENANCE-FREE

### GEL



- FOR MOTORCYCLES WITH HIGH DISPLACEMENT AND EQUIPMENT
- CAPACITY FROM 5 TO 30AH
- HERMETIC VALVE REGULATED SEALING (VRLA)
- GEL TECHNOLOGY WITH UP TO 180° TILT
- HIGH STARTING POWER
- ACTIVATED
- GEL
- MAINTENANCE-FREE
- HIGH COLD START CAPABILITY
- MINIMUM SELF-DISCHARGE
- LONG SERVICE LIFE

### LITIO



- FOR ALL TYPES OF MOTORCYCLES
- CAPACITY FROM 2 TO 18AH
- HERMETIC SEAL
- MULTIPLE POSITIONS
- HIGH STARTING POWER
- ACTIVATED
- ION-LITIO
- MAINTENANCE-FREE
- HIGH STARTING CAPACITY
- MINIMUM SELF-DISCHARGE
- LONGER LIFE CYCLE
- HIGHER ENERGY
- CHARGE INDICATOR
- ULTRA-FAST RECHARGING
- SPECIAL FOR COMPETITION

# WITH MAINTENANCE

## MOTORCYCLE RANGE WITH MAINTENANCE

This range offers wide coverage, guaranteeing excellent performance. Delivered with an acid pack, these batteries must be activated before first use and require periodic servicing. Thanks to their dry construction design, they require no maintenance during long periods of storage, making them a practical and long-lasting option.



### PERFECT BALANCE BETWEEN QUALITY AND PRICE

- **Ready to use:** Available in capacities from 4Ah to 30Ah to suit various needs.
- **Dry construction technology** for durability.
- **Activation prior to first use** via included acid pack.
- **Periodic maintenance** with servicing and refilling as needed.
- **Unique upright installation** for optimum performance.
- **Standard service life**, ideal for conventional applications.
- **Extended storage.**



VERTICAL INSTALLATION    EXTENDED STORAGE    ACTIVATION BEFORE USE    DRY CONSTRUCTION

It is recommended to wait at least one hour before use after refilling the electrolyte.

# PURE ENERGY

## REFERENCES



### MOTORCYCLE RANGE WITH MAINTENANCE

References	Voltage V	Capacity C10	Starting CCA	Polarity	Dimensions (mm)		
					Length	Width	Height
FB4L-B	12	4	45	- / +	120	70	92
FB5L-B	12	5	60	- / +	120	61	128
FB7-A	12	8	95	+ / -	135	75	133
FB7L-B2	12	8	80	- / +	135	75	133
FB9-B	12	9	115	+ / -	135	75	139
FB9L-B	12	9	115	- / +	135	75	139
FB10L-A2	12	11	130	- / +	135	90	145
FB10L-B2	12	11	130	- / +	135	90	145
FB12A-A	12	12	160	+ / -	134	80	160
FB12AL-A2	12	11	160	- / +	134	80	160
FB14-A2	12	14	180	+ / -	134	89	166
FB14L-A2	12	14	180	- / +	134	89	166
FB14L-B2	12	14	180	- / +	134	89	166
FB16AL-A2	12	16	210	- / +	204	70	163
FB16CL-B	12	19	240	- / +	175	100	175
FB30L-B	12	30	300	- / +	168	132	176
FB30CL-B	12	30	300	- / +	168	132	190
F50-N18L-A	12	20	240	- / +	205	90	160
51913	12	19	210	- / +	186	82	171
53030	12	30	280	- / +	183	128	170



# MAINTENANCE-FREE AGM MOTORCYCLE RANGE

The AGM Motorbike edition range offers acid pack batteries, which require activation, and maintenance-free, absorbed electrolyte for increased durability. Thanks to this technology, AGMs resist vibrations and spills, ensuring reliable performance for motorcycles.



## BATTERIES WITH LONG-LASTING PERFORMANCE

- **Ready to use:** Available in capacities from 2.3Ah to 22Ah to suit various needs.
- **Advanced sealing:** Prevents corrosion and prevents leakage for greater safety.
- **High impact and vibration resistance:** Ensuring durability.
- **High performance AGM technology:** Designed for reliability and efficiency.
- **Safe tilting up to 45°:** Greater installation versatility.
- **6V and 12V models with reduced maintenance:** Optimizes user experience.
- **High-performance separators:** Provide powerful starting capability.



VERTICAL INSTALLATION



SPECIAL SEALING



IMPACT AND VIBRATION  
RESISTANCE



HIGH PERFORMANCE



HIGH STARTING CAPACITY

It is recommended to wait at least one hour before use after refilling the electrolyte.

# PURE ENERGY

## REFERENCES



### AGM MAINTENANCE-FREE RANGE

References	Voltage V	Capacity C10	Starting CCA	Polarity	Dimensions (mm)		
					Length	Width	Height
FTX4L-BS	12	3	70	- / +	112	70	86
FTX5L-BS	12	4	80	- / +	112	70	105
FTX7A-BS	12	6	105	+ / -	150	87	94
FTX7L-BS	12	6	100	- / +	112	70	131
FTX9-BS	12	8	135	+ / -	150	87	106
FTX12-BS	12	10	180	+ / -	150	87	131
FT12A-BS	12	10	175	+ / -	150	87	105
FTX14-BS	12	12	200	+ / -	150	87	146
FTX14L-BS	12	12	200	- / +	150	87	146
FTX16-BS	12	14	230	+ / -	150	87	161
FTX20CH-BS	12	18	270	+ / -	150	87	161
FTX20-BS	12	18	270	+ / -	175	87	155
FTX20L-BS	12	18	270	- / +	175	87	155
FTX24HL-BS	12	21	350	- / +	205	87	162
FLA12-22	12	22	210	- / +	182	77	168



# HERMETIC MOTORCYCLE RANGE START-STOP GEL

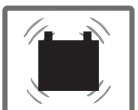
Our Motorbike edition Hermetic batteries with Gel technology offer safe and long-lasting performance. Their sealed leak-proof technology prevents spills, while their anti-vibration and impact-resistant design ensures optimal performance in any terrain. In addition, being maintenance-free, they provide comfort and reliability throughout their useful life, making them the ideal choice for those looking for power and safety on every ride.

STAR STOP



## SAFE AND DURABLE PERFORMANCE

- **Ready to use:** Available in capacities from 4Ah to 30Ah to suit various needs.
- **Sealed Gel Technology:** Withstands tilts up to 90° for uninterrupted performance.
- **Cold Weather Starting:** Powerful starting capability even in cold temperatures.
- **Long Durability:** Longer life guaranteed, designed to stand the test of time.
- **High corrosion resistance:** Due to their advanced design, they offer less corrosion over time.
- **Advanced Separators:** Designed to maximize starting power, offering superior performance at all times.



IMPACT AND VIBRATION RESISTANCE



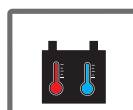
HIGH PERFORMANCE



HIGH STARTING CAPACITY



MINIMUM SELF-DISCHARGE



RESISTANT TO EXTREME TEMPERATURES



90° INCLINATION

# PURE ENERGY

## REFERENCES



### HERMETIC MOTORCYCLE RANGE START-STOP GEL

References	Voltage V	Capacity C10	Starting CCA	Polarity	Dimensions (mm)		
					Length	Width	Height
GELBB4L-B	12	4	40	- / +	120	70	91
GELBB7L-B2	12	7	80	- / +	137	75	124
GELBB7-A	12	8	210	+ / -	135	75	133
GELBB9-B	12	9	115	+ / -	135	75	139
GELBB12AL-A2	12	12	165	- / +	135	80	160
GELBB16CL-B	12	19	240	- / +	175	100	175
GELBT7B-4	12	6,5	110	+ / -	150	65	93
GELBT9B-4	12	8	120	+ / -	150	68	105
GELBT12B-4	12	10	210	+ / -	150	69	130
GELBT12-10Z	12	10	180	+ / -	194	59	112
GELBT14B-4	12	12	210	+ / -	150	69	145
GELBTX4L	12	3	50	- / +	113	70	86
GELBTX5L	12	4	80	- / +	113	70	106
GELBTX7A	12	6	105	+ / -	150	87	94
GELBTX7L	12	7	100	- / +	113	70	131
GELBTX9	12	8	135	+ / -	150	87	105
GELBTX12	12	10	180	+ / -	150	87	130
GELBTX14	12	12	200	+ / -	150	87	146
GELBTX14AHL	12	14	210	- / +	134	89	166
GELBTX16	12	14	230	+ / -	150	87	163
GELBTX20HL	12	18	270	- / +	175	87	155
GELBTX20CH	12	19	320	+ / -	150	87	163
GELBTX24HL	12	21	350	- / +	205	85	162
GELBTX30L	12	30	400	- / +	167	126	174
GELBTZ7S	12	6	130	- / +	113	70	105
GELBTZ10S	12	8.6	190	+ / -	150	87	93
GELBTZ12S	12	11	210	+ / -	150	87	110
GELBTZ14S	12	11,2	230	+ / -	150	87	110
GEL12-22	12	22	250	- / +	181	76	167
GEL53030	12	30	330	- / +	178	125	166



**UNLIMITED POWER**

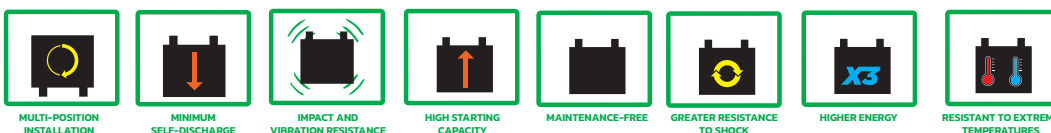
# LITHIUM MOTORCYCLE RANGE

The Motorbike Lithium range revolutionizes motorcycle performance with a battery up to four times lighter than lead-acid batteries, improving maneuverability and efficiency. Made of high-density lithium iron phosphate, it is a greener and safer option, free of lead, mercury, cadmium and sulfuric acid.



## LIGHTNESS, POWER AND SUSTAINABILITY FOR YOUR MOTORCYCLE

- **Ready to use:** Available in capacities from 2Ah to 18Ah to suit various needs.
- **Maximum Starting Power:** Superior performance for fast and efficient starting.
- **Increased Durability:** Extended life cycle for long and reliable use.
- **Tripled Energy:** Up to 3 times more power compared to conventional batteries.
- **Maintenance Free:** Sealed design eliminates the need for periodic service.
- **High Discharge Resistance:** Increased stability and performance even under demanding conditions.
- **LED Charge Indicator:** Controls the energy level at all times.
- **Ultra Fast Recharge:** Optimized technology for faster and more efficient charging.
- **High Performance:** State-of-the-art technology for more stable and powerful power delivery



## REFERENCES

LITHIUM RANGE								
References	Voltage	Capacity C10	Watts(Wh)	Starting CCA	Polarity	Dimensions (mm)		
						Length	Width	Height
FLITZ5S-FP	12	10	120	140	- / +	113	70	85
FLITZ7S-FP	12	12	144	170	- / +	113	70	85
FLITZ10S-FP	12	18	216	280	+ / -	150	87	93
FLITZ14S-FP	12	20	240	350	+ / -	150	87	93
FLIT9B-FP	12	15	180	210	+ / -	150	65	92
FLIT12B-FP	12	20	240	350	+ / -	150	65	130
FLITX5L-FP	12	8	96	110	- / +	113	70	85
FLITX7A-FP	12	10	120	140	+ / -	150	87	93
FLITX9-FP	12	15	180	210	+ / -	150	87	105
FLITX14H-FP	12	20	240	280	+ / -	150	87	93
FLITX14AHQ-FP	12	20	240	280	- / +	134	75	133
FLITX20HQ-FP	12	24	288	490	- / +	175	87	155
FLITX20CH-FP	12	24	288	420	+ / -	150	87	105
FLI51913-FP	12	28	336	525	- / +	181	77	170
FLITX30Q-FP	12	32	384	560	- / +	167	126	174
FLIB5L-FP	12	8	96	110	- / +	120	60	92
FLIB7B-FP	12	10	120	140	+ / -	120	60	92
FLIB7BL-FP	12	10	120	140	- / +	120	60	92
FLIB9Q-FP	12	12	144	210		134	75	133
FLIPO1	12	10	120	140	- / +	92	52	90
FLIPO2	12	12	144	210	+ / -	113	70	85

SPECIAL LITHIUM RANGE FOR POLARIS & KAWASAKI UTVS								
References	Voltage	Capacity C10	Watts(Wh)	Starting CCA	Polarity	Dimensions (mm)		
						Length	Width	Height
FLI1230-LN1	12	68	816	600	+ / -	207	175	190
FLI1230R-LN1	12	68	816	600	- / +	207	175	190

SPECIAL LITHIUM RANGE FOR HARLEY-DAVIDSON								
References	Voltage	Capacity C10	Watts(Wh)	Starting CCA	Polarity	Dimensions (mm)		
						Length	Width	Height
FLIVT14L-FP	12	32	384	400	- / +	150	87	145
FLIVT20L-FP	12	42	504	500	- / +	175	87	155
FLIVT30L-FP	12	60	720	600	- / +	169	131	174

SPECIAL LITHIUM RANGE LAWN MOWERS								
References	Voltage	Capacity C10	Watts(Wh)	Starting CCA	Polarity	Dimensions (mm)		
						Length	Width	Height
FLIU1Q-FP	12	18	216	210	- / +	167	124	163
FLI12-18-FP	12	18	216	210	- / +	181	77	170

# INDUSTRY

Our range of industrial batteries is designed to deliver maximum performance in the most demanding applications. With advanced technology, high quality materials and a focus on sustainability, they guarantee a reliable power source for heavy machinery, backup systems, electric vehicles, UPS, etc...

**DESIGNED TO PROVIDE POWER OVER LONG PERIODS OF TIME**

**HOSPITAL, MILITARY, MARINE, AERONAUTICAL AND AERONAUTICAL SYSTEMS**

**APPLICATION IN RENEWABLE ENERGIES (PHOTOVOLTAIC SYSTEMS, WIND POWER...)**

**FOR ELECTRICAL MACHINERY (FORKLIFTS, CRANES...)**

**SUITABLE FOR UPS, HOSPITAL MACHINERY, BOOSTERS, VENDING MACHINES, IRRIGATION SYSTEMS**

**ELECTRIC WHEELCHAIRS, CLEANING MACHINERY, ETC.**



**LIGHT TRACTION**



**LIGHT TUBULAR TRACTION**



**HEAVY TRACTION**



**SOLAR RANGE**



**AGM CARBON**



**AGM STATIONARY**



**AGM HIGH RATE**



**AGM ELECTRIC VEHICLE**



**AGM FRONT TERMINAL**



**DEEP CYCLE GEL**



**LITHIUM LIFEPO4**



# LIGHT TRACTION

## LIGHT TRACTION BATTERIES RANGE

Light-duty traction range batteries are specifically designed to power electric motors that require a constant, long-lasting current supply. These batteries offer excellent discharge capacity, making them ideal for mobility equipment, light electric vehicles, golf carts, small forklifts, industrial sweepers and other applications that demand reliable and efficient power. Their robust design ensures long life and optimum performance in demanding environments, providing a reliable, low-maintenance power solution.



### CONSTANT POWER, LONG-LASTING PERFORMANCE

- **Ready to use:** Available in 6V, 8V and 12V voltage. Capacities from 105Ah to 420Ah to suit all applications.
- **Advanced Pb/Sb alloy grid technology:** High thickness plates for durability.
- **Designed for stationary use and light duty applications.**
- **Fiberglass envelope separator:** Optimizes performance and safety.
- **Low maintenance:** Lower water consumption and higher operating efficiency.
- **Extended life cycle:** Ideal for high performance applications.
- **Flat plate version:** Designed to withstand multiple loading and unloading cycles.
- **Extra thick plates:** Improves resistance to deep discharge and maximizes service life.



# PURE ENERGY

## REFERENCES



### LIGHT TRACTION

References	Voltage	Capacity per hour (Ah)					Dimensions (mm)			Terminal Type	Polarity	Quantity per Pallet
		C100	C20	C10	C5	C1	Lenth	Width	Height			
6-FS-T105	6	275	225	207	185	94	259	179	276	EHPT	2	36
6-FS-240	6	320	250	220	198	100	244	191	275	EHPT	2	36
S-305	6	350	328	290	258	-	311	180	356	DUAL	2	24
6-FS-L16HC	6	489	420	360	344	176	318	181	425	DUAL	2	24
8-FS-155	8	198	155	136	122	62	259	181	279	EHPT	1	24
FQS105EH.0	12	140	105	96	89	62	323	175	190	EHPT	0	36
12-FS-155	12	206	155	136	122	62	329	182	274	EHPT	1	24
12-FS-185HC	12	279	210	185	166	84	391	178	365	DUAL	1	24

**DESIGNED FOR LONG-LASTING PERFORMANCE**



# LIGHT TUBULAR TRACTION

## LIGHT TUBULAR TRACTION

Our traction batteries with tubular positive plate technology are designed to deliver exceptional performance in the most demanding conditions. Thanks to their advanced structure, these batteries guarantee longer life and durability, even in deep discharge cycles. Maximum resistance to vibrations and extreme temperatures, ideal for extreme environments. Maximum energy efficiency, providing a constant and reliable power supply. They are the perfect choice for industrial applications, electric vehicles, material handling equipment and any system requiring a robust, high-performance power source.



### CONSTANT POWER, LONG-LASTING PERFORMANCE

- **Ready to use:** Available in 6V and 12V voltage. Capacities from 115Ah to 240Ah to suit various needs.
- **Increased charge retention:** Optimizes performance in extended use.
- **Extended service life:** Ideal for demanding applications.
- **High operational safety:** Designed for reliable performance.
- **Superior cycling endurance:** Withstand multiple charges and discharges without premature degradation.
- **Vibration resistant design:** Perfect for environments with constant motion.
- **Low self-discharge:** Ensures immediate availability after long periods of inactivity.
- **Electrolyte tube technology:** Offer higher efficiency and advanced performance.
- **Designed for medium to heavy-duty applications, such as golf carts and cleaning machines.**
- **More than 1,200 cycles guaranteed, ensuring excellent long-term performance.**

# PURE ENERGY

## REFERENCES



### LIGHT TUBULAR TRACTION

References	Voltage	Capacity per hours (Ah)					Dimensions (mm)			Terminal Type	Polarity	Quantity per Pallet
		C100	C20	C10	C5	C1	Length	Width	Height			
FQS12-105TB	12	115	110	-	90	-	303	175	229	1	0	28
FQS12-115TB	12	130	115	-	95	-	344	172	234	1	0	24
FQS12-130TB	12	155	140	-	120	-	344	172	284	1	0	24
FQS6-240TB	6	240	220	-	180	-	244	190	270/281	1	2	32



# HEAVY TRACTION

## HEAVY TRACTION

The heavy-duty traction range provides reliable, long-lasting power for high-performance electrical machinery such as forklifts, electric tractors and aerial lifts. Designed to withstand deep discharge, they stand out for their energy efficiency and long service life. Depth of discharge (DoD) is key to their performance, as it influences battery life. Our batteries offer longer autonomy, efficient charge cycles and high durability even in demanding environments.



### THE BEST SOLUTION FOR DEEP DISCHARGE

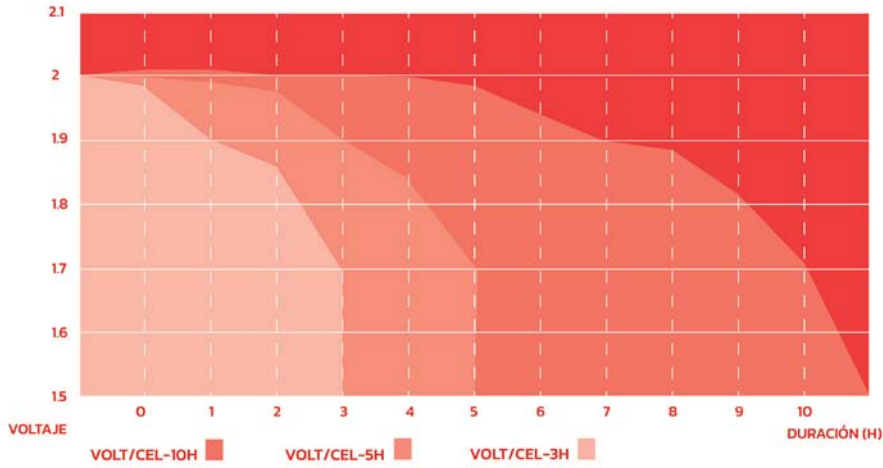
- **High performance batteries:** Capacities ranging from 50Ah to 300Ah in C5.
- **Modular design of connected 2V cells:** Optimizes efficiency and durability.
- **Higher capacity and endurance compared to conventional starter batteries.**
- **Ultra-robust tubular positive plates:** Improved resistance to deep cycling.
- **High-tech microporous separators:** Ensure greater stability and performance.
- **High-strength polypropylene housings:** Designed to withstand extreme conditions.
- **Maximum charging efficiency:** Reducing recharge times and optimizing energy consumption.
- **Designed to provide power for long periods of time.**



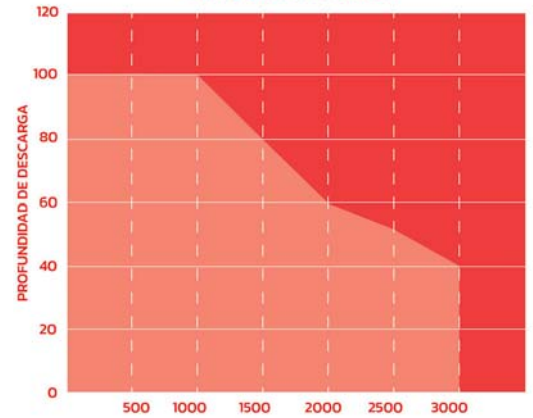
# PURE ENERGY

## REFERENCES

TENSIÓN VS CORRIENTE DE DESCARGA



PROFUNDIDAD DE DESCARGA



Cell Type	Dish Type	Dimensions (mm)				Cell Type	Dish Type	Dimensions (mm)			
		Length	Width	Height				Length	Width	Height	
H	HM			H	HM						
2PZS 120	PZS60AH	47	198	342	370	2PZS 210	PZS105AH	47	198	527	555
3PZS 180		65				3PZS 315		65			
4PZS 240		83				4PZS 420		83			
5PZS 300		101				5PZS 525		101			
6PZS 360		119				6PZS 630		119			
7PZS 420		137				7PZS 735		137			
8PZS 480		155				8PZS 840		155			
9PZS 540		174				9PZS 945		174			
10PZS 600		192				10PZS 1050		192			
2PZS 160		PZS80AH				47		198			
3PZS 240	65		3PZS 230	65							
4PZS 320	83		4PZS 345	83							
5PZS 400	101		5PZS 460	101							
6PZS 480	119		6PZS 575	119							
7PZS 560	137		7PZS 805	137							
8PZS 640	155		8PZS 920	155							
9PZS 720	174		9PZS 1035	174							
10PZS 800	192		10PZS 1150	192							
2PZS 180	PZS90AH		47	198	477	505	2PZS 250		PZS140AH	47	198
3PZS 270		65	3PZS 375				65				
4PZS 360		83	4PZS 500				83				
5PZS 450		101	5PZS 625				101				
6PZS 540		119	6PZS 750				119				
7PZS 630		137	7PZS 875				137				
8PZS 720		155	8PZS 1000				155				
9PZS 810		174	9PZS 1125				174				
10PZS 900		192	10PZS 1250				192				
2PZS 160		PZS80AH	47				198	402		430	
2PZS 240	65		3PZS 465	65							
2PZS 320	83		4PZS 620	83							
2PZS 400	101		5PZS 775	101							
2PZS 480	119		6PZS 930	119							
2PZS 560	137		7PZS 1085	137							
2PZS 640	155		8PZS 1240	155							
2PZS 720	174		9PZS 1395	174							
2PZS 800	192		10PZS 1550	192							

# SOLAR RANGE

## SOLAR RANGE

Our range of solar batteries offers efficient, durable and cost-effective solutions for storing and using solar energy. They are designed with advanced technology to ensure optimal storage without maintenance. They are easy to integrate with existing photovoltaic systems while respecting the environment. They offer benefits such as energy autonomy and reduced carbon footprint. Available in a variety of models, they adapt to the needs of both homes and businesses.



### SOLAR ENERGY: EFFICIENT, DURABLE AND SUSTAINABLE

- **Ready to use:** Available in capacities from 160Ah to 300Ah to suit various needs.
- **Sealed, maintenance-free, spill-free design:** Ideal for demanding applications.
- **Advanced Ca/Ca alloy grid technology:** Thick plates for increased durability.
- **Excellent deep discharge recovery:** Maximizes service life.
- **Low self-discharge:** (Approx. 3% per month at 20°C), ensuring higher availability.
- **Robust structure with high impact resistance:** Ideal for extreme conditions.
- **Higher cyclic performance and resilience:** Optimizes durability.
- **Withstands higher temperatures and greater depth of discharge:** High efficiency in demanding environments.
- **Life cycle greater than 1,100 cycles at 50% DOD at 20°C:** Prolonging its use over time.
- **Low outgassing:** Ensures safer and more environmentally friendly use with 99% gas recombination.



# PURE ENERGY

## REFERENCES



### SOLAR RANGE

References	Voltage V	Capacity C100	Watts (Wh)	Polarity	Hold Down	Terminal Type	Dimensions(mm)			Quantity per Pallet
							Length	width	Height	
FQS12-160SOLAR	12	160	1920	3	B00	1	513	190	223	28
FQS12-215SOLAR	12	215	2580	3	B00	1	513	223	223	18
FQS12-250SOLAR	12	250	3000	3	B00	1	513	273	242	18
FQS12-300SOLAR	12	300	3600	3	B00	1	513	275	242	15

**THE MOST ADVANCED TECHNOLOGY FOR SOLAR BATTERIES**



# AGM CARBON

Our range of deep cycle carbon additive AGMs are designed to offer maximum performance in frequent discharge applications. Maintenance-free and spill-proof, they combine a robust industrial design with a long service life and high cycling resistance. Thanks to their advanced carbon additive technology, they maintain optimum performance even in partial states of charge (PSOC), ensuring efficiency and reliability in every use.



## DURABLE ENERGY

- **Ready to use:** Available in capacities from 90Ah to 400Ah to suit various needs.
- **Ready-to-use charging in 6V, 8V and 12V configurations.**
- **AGM Carbon (VRLA) Technology:** Superior performance and higher efficiency.
- **Low self-discharge:** Ensures availability after long periods of inactivity.
- **Maintenance-free:** No need to add water or make adjustments.
- **No acid handling:** Ensures safe and clean operation.
- **Maximum service life:** Designed for extended performance.
- **No stratification or spillage:** Ideal for demanding and safe applications.
- **Reinforced grid and plates:** Offer greater durability and strength.
- **More than 750 cycles at 80% deep discharge and more than 1,400 cycles at 50%, optimizing service life.**
- **Carbon additives:** Improve partial state of charge (PSOC) performance and increase charging efficiency.

# PURE ENERGY

## REFERENCES



### AGM CARBON

References	Voltage	Capacity per hours (Ah)					Dimensions (mm)			Terminal Type	Polarity	Quantity per Pallet
		C100	C20	C10	C5	C1	Length	Width	Height			
FQS6-225AGMC	6	246	225	210	192	-	260	180	253	T11	2	32
FQS6-245AGMC	6	270	245	232	210	-	243	187,5	275	T11	1	32
FQS6-265AGMC	6	285	268	255	230	-	262	180	268	T11	2	32
FQS6-350AGMC	6	385	350	332	305	-	295	180	368	DUAL	2	24
FQS6-400AGMC	6	435	400	375	342	-	295	180	428	DUAL	2	24
FQS8-170AGMC	8	180	170	155	145	-	260	180	274	DUAL	1	24
FQS12-90AGMC	12	93	90	85	77	-	260	168	214	T11	1	32
FQS12-105AGMC	12	115	108	104	96	90	306	168	214	T11	1	24
FQS12-115AGMC	12	130	118	113	107	-	330	173	220	T11	1	24
FQS12-148AGMC	12	160	148	141	122	118	340	172	286	T11	1	24
FQS12-150AGMC	12	166	150	143	136	-	327	180	274	T11	1	24
FQS12-180AGMC	12	194	180	174	162	-	483	170	238,5	T11	1	12



# AGM STATIONARY

Our stationary AGM range is designed to meet the demands of long-term cyclic applications where frequent charging and discharging is required. Unlike conventional batteries, which are primarily geared towards engine starting, the batteries provide a constant, long-lasting power source, essential for systems that rely on an uninterrupted power supply.



## CONSTANT AND DURABLE ENERGY

- **Ready to use:** Available in capacities from 1.2Ah to 250Ah to suit various needs.
- **Advanced AGM VRLA technology:** Valve regulated for maximum efficiency and safety.
- **Large negative plates:** Optimize capacity and performance.
- **Sealed, maintenance-free design: No need for water refilling.**
- **High vibration resistance:** Ideal for demanding, high-motion environments.
- **Excellent recovery after deep discharge:** Prolongs service life.
- **Low self-discharge (approx. 3% per month at 20°C), ensuring higher availability.**
- **Operation in any orientation (except continuous inverted use), providing versatility.**
- **Low gas emissions:** Meeting ecological standards, with 99% recombination.
- **Double cyclic performance compared to standard AGM batteries.**
- **Versatile applications:** Ideal for UPS, scales, marine, hospital systems, caravans, telecommunications, alarm control panel, workshop machinery, solar, etc..

# PURE ENERGY

## REFERENCES

### FQS BATTERIES

## AGM STATIONARY

References	Voltage	Capacity (Ah)	Type			Dimensions (mm)			Polarity
			Technology	Terminal	Valve	Length	Width	Height	
FQS6-1.2AGM	6	1,2	AGM	T1	Vrla	97	24	51	1
FQS6-3.2AGM	6	3,2	AGM	T1	Vrla	134	34	60	1
FQS6-4.5AGM	6	4,5	AGM	T1	Vrla	70	47	100	5
FQS6-7.5AGM	6	7	AGM	T1	Vrla	151	34	94	1
FQS6-12AGM	6	12	AGM	T2	Vrla	151	51	94	1
FQS6-200AGM	6	200	AGM	T1	Vrla	260	180	254	3
FQS12-1.2AGM	12	1,2	AGM	T1	Vrla	97	43	52	3
FQS12-2.3AGM	12	2,3	AGM	T1	Vrla	178	35	60	1
FQS12-2.9AGM	12	2,9	AGM	T1	Vrla	78	55	98	5
FQS12-3.2AGM	12	3,2	AGM	T1	Vrla	133	67	61	3
FQS12-5.4AGM	12	5,4	AGM	T1	Vrla	90	70	101	1
FQS12-6AGM	12	6	AGM	T1	Vrla	151	51	93	4
FQS12-7AGM	12	7	AGM	T1	Vrla	151	65	94	4
FQS12-9AGM	12	9	AGM	T2	Vrla	151	65	94	4
FQS12-12AGM	12	12	AGM	T2	Vrla	150	97	98	4
FQS12-18AGM	12	18	AGM	T2	Vrla	180	76	167	2
FQS12-26AGM	12	26	AGM	T12	Vrla	166	175	125	2
FQS12-35AGM	12	35,4	AGM	T6	Vrla	195	130	164	1
FQS12-40AGM	12	40	AGM	T6	Vrla	197	165	170	2
FQS12-50AGM	12	50	AGM	T6	Vrla	197	165	170	2
FQS12-55AGM	12	55	AGM	T6	Vrla	228	137	210	1
FQS12-60AGM	12	60	AGM	T6	Vrla	229	138	210	1
FQS12-80AGM	12	70	AGM	T6	Vrla	259	168	208	1
FQS12-80AGMB	12	80	AGM	T6	Vrla	348	167	178	1
FQS12-100AGM	12	100	AGM	T11	Vrla	330	173	212	1
FQS12-120AGM	12	120	AGM	T11	Vrla	408	177	225	1
FQS12-150AGM	12	150	AGM	T11	Vrla	485	170	240	1
FQS12-250AGM	12	250	AGM	T11	Vrla	520	268	245	3

The capacity of stationary AGM batteries is measured as a function of the discharge time. For batteries with capacities ranging from 0 to 33 Ah, the measurement is made in C10, which means that the capacity is calculated with a constant discharge for 10 hours. For capacities above 33 Ah, on the other hand, the C20 standard is used, i.e. the capacity is determined with a sustained discharge for 20 hours. This classification allows a better accuracy in the evaluation of the performance according to the type and size of the battery.



# AGM ELECTRIC VEHICLE

The electric vehicle (EV) range represents the core of future mobility. With cutting-edge technology, they provide the essential power for scooters, wheelchairs, scooters and other electric means of transportation. Redefining efficiency and sustainability in the industry as an innovative alternative to fossil fuels. These batteries drive progress towards a cleaner, more sustainable and energy-efficient world.



## POWER, EFFICIENCY AND A SUSTAINABLE FUTURE

- **Advanced internally formed VRLA technology:** Optimize performance, stability and safety by incorporating a regulating valve.
- **Environmentally friendly cadmium- and arsenic-free alloy:** Minimize environmental impact.
- **Highly reliable sealed design:** No leakage or fluid maintenance.
- **High energy density and optimized efficiency:** Maximize storage capacity.
- **Excellent performance in high current discharges:** Ensures constant power.
- **Optimal charge acceptance:** Reduce recharge times and improve operating efficiency.
- **Resistant to extreme temperatures.**
- **Low self-discharge:** Holds charge longer and reduces the need for frequent recharging.
- **Long service life:** Designed to withstand deep charge and discharge cycles.



MORE DURATION



MORE POWER



MORE SAFE



MORE ECOLOGIC

# PURE ENERGY

## REFERENCES

AGM ELECTRIC VEHICLE						
References	Voltage	Discharge rate	Capacity (Ah)	Dimensions (mm)		
				Length	Width	Height
FQS6-200AGMVE	6	3	200	260	180	275
FQS8-150AGMVE	8	3	150	260	180	285
FQS12-13AGMVE	12	2	13	151	100	101
FQS12-15AGMVE	12	2	15	151	100	108
FQS12-22AGMVE	12	2	22	180	76	170
FQS12-24AGMVE	12	3	24	188	100	130
FQS12-35AGMVE	12	3	35	266	78	170
FQS12-38AGMVE	12	3	38	223	108	175
FQS12-45AGMVE	12	3	45	223	120	175
FQS12-52AGMVE	12	3	52	223	135	177
FQS12-58AGMVE	12	3	58	230	151	180
FQS12-60AGMVE	12	3	60	262	165	169
FQS12-70AGMVE	12	3	70	262	168	220
FQS12-80AGMVE	12	3	80	259	170	210
FQS12-100AGMVE	12	3	100	330	170	210
FQS12-120AGMVE	12	3	120	407	170	240
FQS12-135AGMVE	12	3	135	338	172	280
FQS12-150AGMVE	12	3	150	483	170	240

AGM ELECTRIC VEHICLE WITH GRAPHENE						
References	Voltage	Discharge rate	Capacity (Ah)	Dimensions (mm)		
				Length	Width	Height
FQS12-23AGMVEG	12	2	23	180	76	170
FQS12-35AGMVEG	12	3	35	266	78	170

To obtain the hourly capacity of a battery, divide the capacity (Ah) indicated in the table by the corresponding discharge rate.

**Example:**

For the model FQS12-22AGMVE, whose capacity is 22 Ah and discharge rate is 2, the capacity per hour would be:  
 $22 \text{ Ah} \div 2 = 11 \text{ Ah/hour}$ .



# AGM HIGH RATE

## AGM HIGH RATE

Our AGM High Rate range has been specially designed for applications that demand high power output. Thanks to its advanced technology and premium materials, it offers superior performance in demanding conditions. Through an optimized grid design and an innovative plate paste formula, this battery provides up to 30% more power compared to conventional models. Its robust construction ensures greater energy efficiency, stability and a longer service life.



### HIGH POWER OUTPUT

- **Long Lifetime:** Up to 12 years at 25°C.
- **Sealed and Maintenance-Free Technology:** Operation without the need for periodic checks.
- **Optimized Performance with AGM Technology:** Greater stability and energy efficiency.
- **Minimal self-discharge:** Only 3% per month at 25°C, ensuring longer energy availability.
- **Resistant to extreme temperatures.**
- **High Safety VRLA System:** Over 99% gas recombination, reducing emissions and improving safety.

### EXCELLENT HIGH CAPACITY DISCHARGE PERFORMANCE



# PURE ENERGY

## REFERENCES

AGM HIGH RATE						
References	Voltage	Watts (W)	Dimensions (mm)			Terminal
			Length	Width	Height	Type
FQS12-28HR	12	28	151	65	100	T2
FQS12-35HR	12	35	151	65	100	T2
FQS12-55HR	12	55	152	99	100	T2
FQS12-90HR	12	90	182	77	167	T12
FQS12-110HR	12	110	175	166	126	T12
FQS12-112HR	12	112	165	126	173	T6
FQS12-145HR	12	145	196	130	170	T6
FQS12-165HR	12	165	198	167	173	T6
FQS12-200HR	12	200	230	139	215	T6
FQS12-260HR	12	260	348	168	177	T6
FQS12-300HR	12	300	260	169	219	T6
FQS12-360HR	12	360	306	168	214	T11
FQS12-430HR	12	430	330	172	222	T11
FQS12-460HR	12	460	406	173	233	T11
FQS12-560HR	12	560	481	170	245	T11
FQS12-700HR	12	700	522	240	226	T11
FQS12-800HR	12	800	522	240	226	T11
FQS12-870HR	12	870	522	268	225	T11

## AGM FRONT TERMINAL

Our range of front terminal AGM batteries offers a float life of up to 12 years, thanks to the use of thicker 3D curved plates, guaranteeing higher performance.



AGM FRONT TERMINAL						
References	Voltage	Capacity C10 (Ah)	Dimensions (mm)			Terminal
			Length	Width	Height	Type
FQS12-62TF	12	62	360	100	240	T3
FQS12-75TF	12	75	567	110	296	T4
FQS12-90TF	12	90	507	110	233	T4
FQS12-100TF	12	100	507	110	233	T4
FQS12-125TF	12	125	436	108	316	T4
FQS12-150TF	12	150	567	110	296	T4
FQS12-170TF	12	170	547	124	320	T4
FQS12-180TF	12	180	547	124	320	T4
FQS12-200TF	12	200	547	124	320	T4

To calculate the Ampere hours (Ah) of a battery, divide the Watt hours (Wh) by the Voltage (V).

To calculate the Watt hours (Wh) of a battery, multiply the Ampere hours (Ah) by the Voltage (V).

# GEL DEEP CYCLE

## GEL DEEP CYCLE

Deep cycle batteries are designed for applications that require frequent charge and discharge cycles, providing constant and efficient power. Unlike stationary AGM batteries, they support greater depth of discharge without loss of performance. They offer high endurance, long life and safe performance even under extreme conditions.



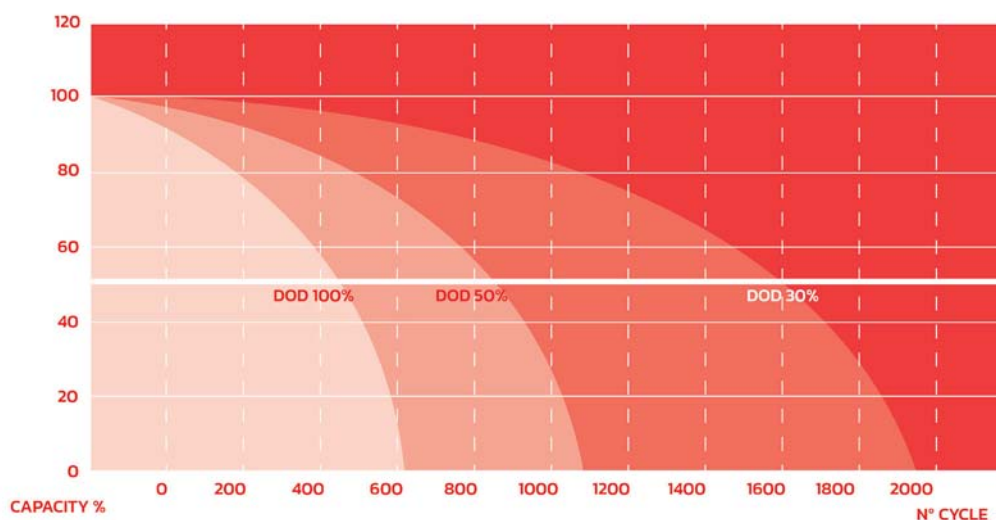
### HIGH RESISTANCE AND LONG SERVICE LIFE

- **Ready to use:** Available in capacities from 20Ah to 180Ah to suit various needs.
- **Advanced VRLA gel technology:** Valve regulated with gelled electrolyte for safety and performance in extreme temperatures.
- **Sealed, maintenance-free, spill-free design:** Ideal for demanding applications.
- **Excellent deep discharge recovery:** Maximizes service life.
- **Low self-discharge:** (Approx. 3% per month at 20°C), ensuring higher availability.
- **Robust structure with high impact resistance:** Ideal for extreme conditions.
- **Higher cyclic performance and resilience:** Optimizes durability.
- **Withstands higher temperatures and greater depth of discharge:** High efficiency in demanding environments.
- **Cycle life in excess of 1,200 cycles at 50% DOD at 20°C:** Extending its use over time.
- **Operation in any orientation (except continuous inverted use):** Providing maximum flexibility.
- **Triple cyclic performance compared to AGM batteries.**
- **Low gassing:** Ensures safer and more environmentally friendly use with 99% gas recombination.
- **Versatile applications:** For railway beacons, electric vehicles, golf carts, scooters or wheelchairs, marine, solar, caravans, off-grid residential systems, telecommunications systems, traffic control and monitoring systems, etc..

# PURE ENERGY

## REFERENCES

### LIFE CYCLE



### GEL DEEP CYCLE

References	Voltage	Capacity (Ah)	Type			Dimensions (mm)			Polarity
			Technology	Terminal	Valve	Length	Width	Height	
FQS12-22GEL	12	22	GEL	T12	GEL	181	76	167	2
FQS12-26GEL	12	26	GEL	T12	GEL	165	175	125	2
FQS12-26AGEL	12	26	GEL	T12	GEL	165	125	175	2
FQS12-33GEL	12	33	GEL	T6	GEL	196	130	170	1
FQS12-40GEL	12	40	GEL	T6	GEL	197	165	170	2
FQS12-50GEL	12	50	GEL	T6	GEL	230	139	215	1
FQS12-55GEL	12	55	GEL	T6	GEL	229	138	213	1
FQS12-60GEL	12	60	GEL	T6	GEL	260	168	179	1
FQS12-80GEL	12	75	GEL	T6	GEL	260	168	211	1
FQS12-100GEL	12	100	GEL	T11	GEL	330	173	232	1
FQS12-120GEL	12	120	GEL	T11	GEL	409	176	225	1
FQS12-150GEL	12	150	GEL	T11	GEL	485	170	240	1
FQS12-200GEL	12	200	GEL	T11	GEL	522	240	224	3
FQS12-250GEL	12	250	GEL	T11	GEL	522	268	225	3
FQS6-180GEL	6	180	GEL	T11	GEL	260	181	246	1

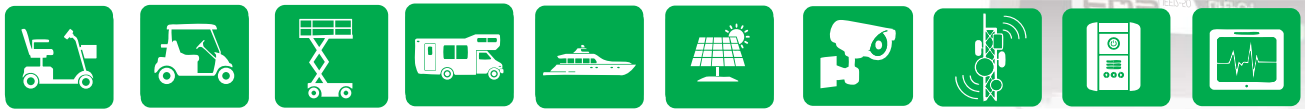
The capacity of Gel deep cycle batteries is measured as a function of the discharge time. For batteries with capacities ranging from 0 to 33 Ah, the measurement is made in C10, which means that the capacity is calculated with a constant discharge for 10 hours. For capacities above 33 Ah, on the other hand, the C20 standard is used, i.e. the capacity is determined with a sustained discharge for 20 hours. This classification allows a better accuracy in the evaluation of the performance according to the type and size of the battery.



**UNLIMITED ENERGY**

# LITHIUM LIFEPO4

Our LiFePO4 range are an innovative and efficient solution to replace lead-acid batteries, thanks to their standard size and compatible voltage. They offer less weight, longer life and better cyclic performance, allowing deep discharges without affecting their durability. In addition, their advanced technology ensures maximum safety, preventing overheating and leakage. With optimized energy efficiency, they are ideal for electric vehicles, caravans, solar systems and power backup, ensuring performance, reliability and sustainability.



## PERFORMANCE AND SUSTAINABILITY

- **Ready to use:** Available in capacities from 6Ah to 200Ah to suit various needs.
- **Advanced Lithium-ferrophosphate technology:** Lithium-ion batteries with a lithium iron phosphate cathode (LiFePO4), which provides longer cycle life, increased safety, and good performance in adverse conditions.
- **100% safe and sealed design:** No risk of spills or explosions.
- **Free of acid and gas emissions:** Ensures clean and environmentally friendly operation.
- **Operation in any orientation:** Maximum installation flexibility.
- **Low self-discharge (approx. 3% per month at 20°C):** Maintain charge for longer.
- **Unmatched energy density:** Optimal power-to-volume ratio.
- **Exceptional cycle life:** Up to 10 times higher performance than AGM and GEL batteries.
- **60% lighter than lead-acid batteries:** Easy handling and installation.
- **Full recovery after deep discharges:** They support up to 100% DOD (vs. 70%-80% in AGM and GEL).
- **Wide thermal tolerance:** Operate in ranges from -20°C to +60°C without compromising performance.
- **Ultra-fast charge and discharge:** Accepts currents up to 10 times higher than lead-acid batteries.



# PURE ENERGY

## REFERENCES

### LITHIUM LIFEPO4

References	Voltage	Capacity (Ah)	Type	Dimensions (mm)			Weight (Kg)
			Technology	Length	Width	Height	
LIFE12-6	12,8	6	LIFEPO4	151	65	94	0,8
LIFE12-10	12,8	10	LIFEPO4	151	98	95	1,4
LIFE12-18	12,8	18	LIFEPO4	181	77	170	2,1
LIFE12-35	12,8	35	LIFEPO4	195	130	160	5
LIFE12-50	12,8	50	LIFEPO4	229	138	205	5
LIFE12-75	12,8	75	LIFEPO4	260	172	210	7,5
LIFE12-100	12,8	100	LIFEPO4	330	172	220	10
LIFE12-120	12,8	120	LIFEPO4	330	172	220	12
LIFE12-150	12,8	150	LIFEPO4	490	171	240	14,5
LIFE12-200	12,8	200	LIFEPO4	521	238	220	19,5
LIFE12-300	12,8	300	LIFEPO4	521	238	220	28

### LITHIUM LIFEPO4 WIT BLUETOOTH

References	Voltage	Capacity (Ah)	Tipo	Dimensions (mm)			Weight (Kg)
			Technology	Length	Width	Height	
LIFE12-22BL	12,8	22	LIFEPO4	165	76	181	3
LIFE12-100BL	12,8	100	LIFEPO4	327	171	234	12,8

### LITHIUM LIFEPO4 FRONT TERMINAL

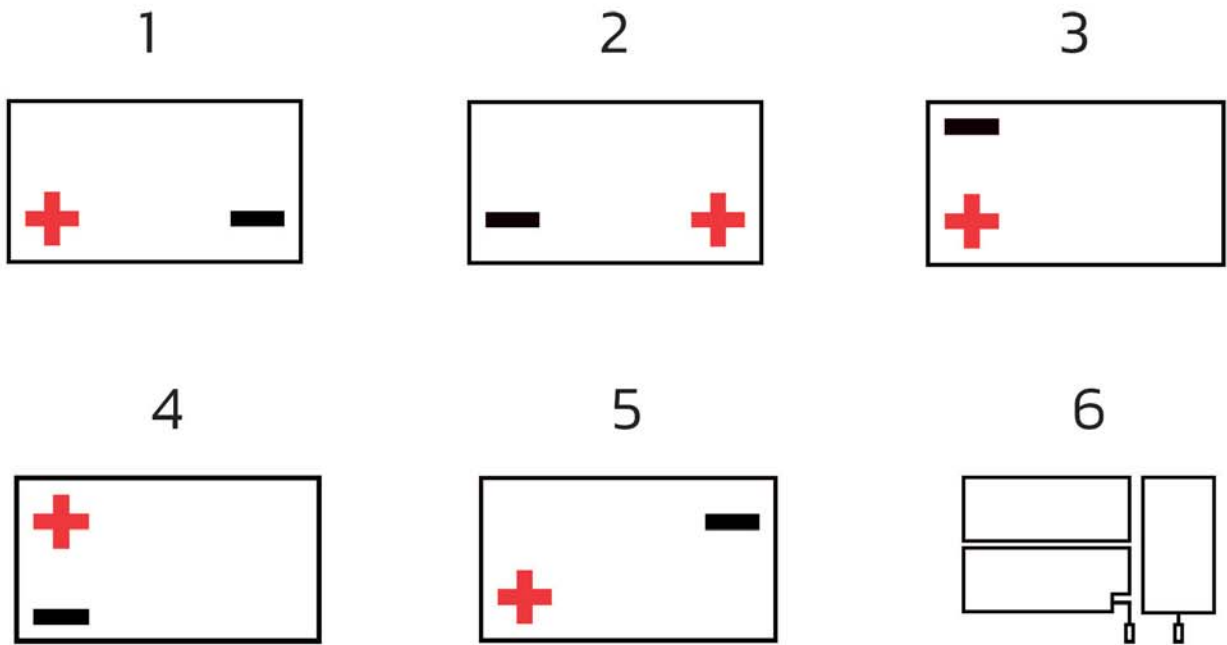
References	Voltage	Capacity (Ah)	Type	Dimensions (mm)			Weight (Kg)
			Technology	Length	Width	Height	
LIFE12-100FT	12,8	100	LIFEPO4	395	110	286	10
LIFE12-200FT	12,8	200	LIFEPO4	561	125	316	19,5







# BATTERY DESIGN



## ACCESSORIES



T11 to passenger car adapter



T6 to passenger car adapter



T1 to T2 adapter

# TESTER FQS300



12V

**BATTERY TEST**



12V Y 24V

**START-UP TEST**



12V Y 24V

**LOAD TEST**



The FQS300 is a 12V lead-acid vehicle battery tester with a built-in printer. It can test batteries from 100 to 2000 Cold Cranking Amps (CCA). It is compatible with Flooded, AGM, GEL and EFB batteries; and features accredited standards including: CCA, JIS, EN, DIN, SAE and IEC. The FQS300 is capable of testing a battery's actual CCA value, health status, starting system and charging system. Designed with advanced conductivity technologies and high quality robust materials.

Testers should be used as a support tool to diagnose batteries or manage warranties. If they are used on new batteries that have not yet been used, they may give erroneous results. FQS BATTERY batteries, manufactured with advanced technology, require a few cycles of use to reach their maximum cranking power (CCA), at which point the tester can diagnose correctly. In contrast, batteries from other manufacturers complete their formation before they are put on the market, so testers can evaluate them from the start. Therefore, the diagnostic reliability of new batteries depends on the manufacturer and the production process.





# FQS<sup>®</sup> BATTERY



Freedom Quality Services, S.L  
C/Laminadora, 36  
41016 Sevilla (España)



+34 954 518 882



[fqsbattery.com](mailto:fqsbattery.com)



[www.fqsbattery.com](http://www.fqsbattery.com)